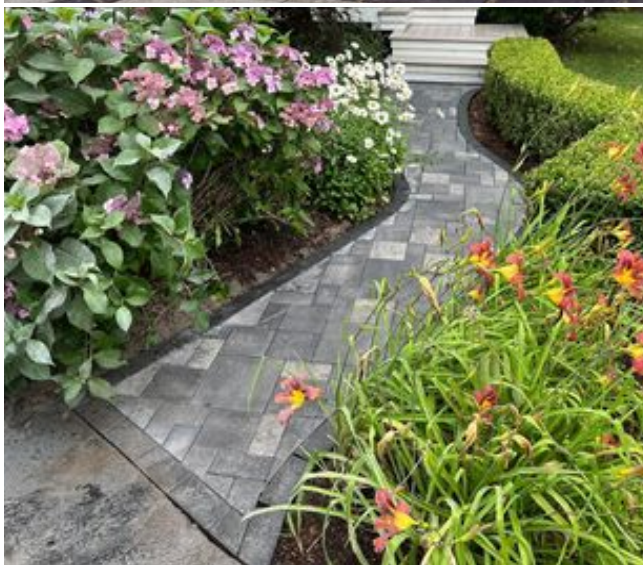


The Concrete Service, Inc.

HARDSCAPE PRICELIST

2024



www.THECONCRETESERVICE.com
(231) 946-7880

CREDITS FOR COVER PICTURES:
PAVER WALKWAY: FOUR SEASONS PROPERTY SOLUTIONS
DRY-STACK FOND DU LAC WALL: TWIN BAY LANDSCAPING

TABLE OF CONTENTS:

VERSA-LOK	PAGES 4-5
PYZIQUE	PAGES 6-7
OLD TOWN WALL	PAGE 8
FIRE PITS	PAGE 9-10
UNILOCK	PAGES 11-12
FENDT	PAGE 13
TRIPLE H	PAGE 14
OAKS	PAGE 15
TECHO-BLOC	PAGES 16-17
GLEN GERY	PAGE 18
NATURAL PAVING	PAGES 19-20
HIGH FORMAT.....	PAGES 21
ED'S CONCRETE PRODUCTS ..	PAGES 22-23
PRECAST STEPS	PAGES 24
NATURAL STONE	PAGES 25-27
DELIVERY	PAGE 28
NOTES	PAGE 29

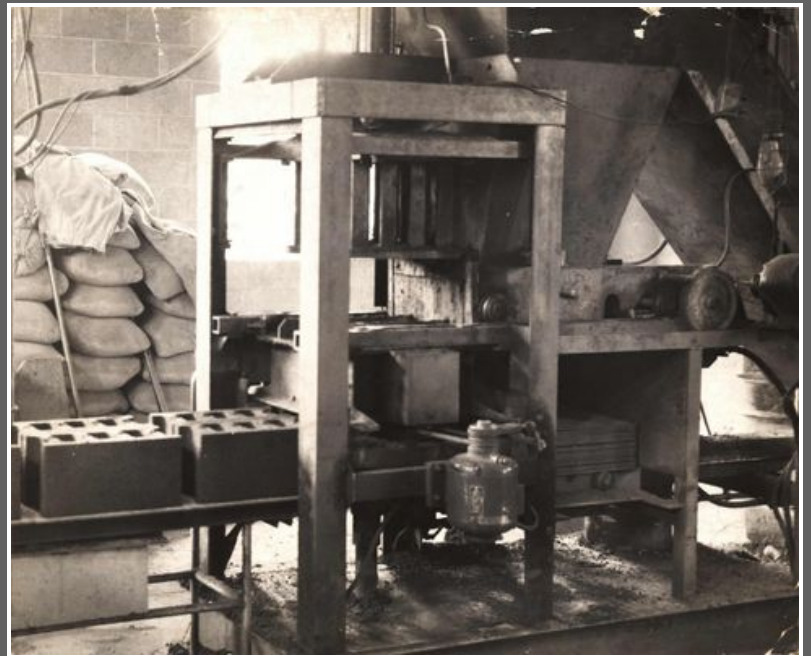


THE CONCRETE SERVICE, INC.

Proudly serving the Traverse City region for
over 90 years.



Below: One of the original block
manufacturing machines.



Above: Ralph Samuelson standing near a block
machine. These were sold country-wide.

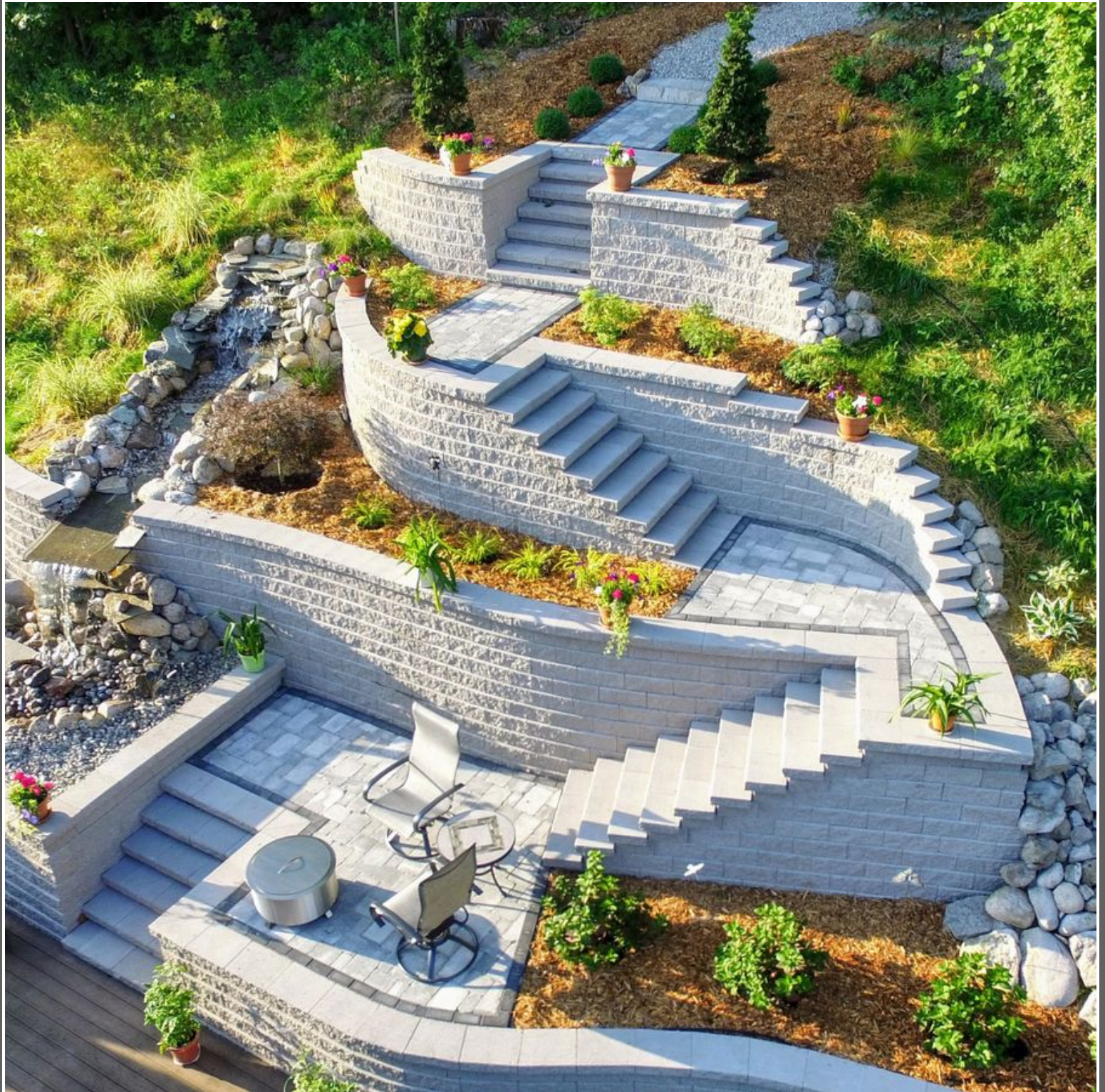


Above: The Concrete Service circa 1940's

VERSA-LOK

THE
CONCRETE
SERVICE,
INC.

BLUE STAR
LANDSCAPE
SUPPLY



FEATURED PROJECT INSTALLED BY: NORTHERN HARDSCAPES

WALL UNIT SPECIFICATIONS:

16" (FACE) X 14" (BACK) X 6" (HEIGHT) X 12" (DEPTH)
.67 FACE FEET PER BLOCK
82 LBS PER BLOCK
48 UNITS PER PALLET
PALLET WEIGHT: 3,936LBS

CAP UNIT SPECIFICATIONS:

16" (FACE) X 16" (BACK) X 3 5/8" (HEIGHT) X 12" (DEPTH)
40 FACE FEET PER BLOCK
50 LBS PER BLOCK
96 UNITS PER PALLET
PALLET WEIGHT: 4,800LBS

STANDARD UNIT PRICING:

**SOLD PER PIECE

NATURAL BLOCK - \$7.04
COLORED BLOCK - \$7.59

NATURAL CAP - \$5.46
COLORED CAP - \$5.85

TUMBLED UNIT PRICING:

**SOLD PER PIECE

NATURAL BLOCK - \$9.87
COLORED BLOCK - \$10.71

NATURAL CAP - \$9.87
TUMBLED CAP - \$10.71

ACCESSORIES:

VERSA-LOK PINS (2 PER BLOCK)

VERSA-GRID 3.0

VERSA-GRID 5.0

VERSA-LIFTERS (DEPOSIT OR PURCHASE)

VERSA-SPLITTER RENTAL

SRW ADHESIVE 10.5 OZ (FOR CAPS)

SRW ADHESIVE 28 OZ

*COLORS MAY VARY DEPENDING ON THE
BLEND AND TIME OF PRODUCTION.*

- \$0.27 EACH

- \$2.58 PER LINEAR FOOT

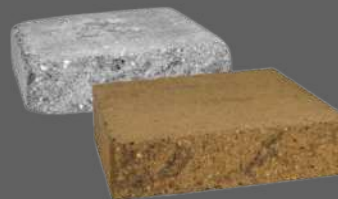
- \$2.87 PER LINEAR FOOT

- \$89.95 EACH

- \$35.00 PER DAY

- \$6.90 EACH

- \$1345 EACH



AVAILABLE COLORS:

EARTH BLEND

CHARCOAL
BLEND

BUCKSKIN
BLEND

ANTIQUE BLEND

NATURAL

*ALL COLORS
AVAILABLE IN
BOTH
STANDARD &
TUMBLED
UNITS*



PYZIQUE

THE
CONCRETE
SERVICE,
INC.

BLUE STAR
LANDSCAPE
SUPPLY



PYZIQUE FIREPIT KITS:

50" OUTSIDE DIAMETER
30" INSIDE DIAMETER
HEIGHTS IN MULTIPLES OF 4"
14 BLOCKS PER LAYER
MAKE IT YOURS.

- FIVE DIFFERENT COLORS
- TWO DIFFERENT TEXTURES
- NO-CUT INSTALLATION (EASY TO ADD/SUBTRACT LAYERS AS NEEDED.)

COMMON HEIGHT FOR A FIREPIT IS 4 COURSES TO MEASURE AT 16"

WALL UNIT SPECIFICATIONS:

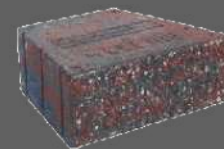
11" (FACE) X 7" (BACK) X 4" (HEIGHT) X 9" (DEPTH)

.31 FACE FEET PER BLOCK

25 LBS PER BLOCK

150 UNITS PER PALLET

PALLET WEIGHT: 3,750 LBS



AVAILABLE COLORS:

STANDARD UNIT PRICING:

**SOLD PER PIECE

NATURAL BLOCK - \$1.95

COLORED BLOCK - \$2.33



FOR CAP OPTION VIEW VERSA-LOK CAPS

EARTH BLEND

CHARCOAL
BLEND

BUCKSKIN
BLEND

ANTIQUE
BLEND

NATURAL

TUMBLED UNIT PRICING:

**SOLD PER PIECE

NATURAL BLOCK - \$3.99

COLORED BLOCK - \$4.31



*ALL COLORS
AVAILABLE IN
BOTH
STANDARD &
TUMBLED
UNITS*

ACCESSORIES:

PYZIQUE ROUNG RING INSERT - \$209.00

PYZIQUE ROUND GRATE - \$124.00

PYZIQUE GRILL GOVER FLAT - \$209.00

PYZIQUE FIRESCREEN - \$446.00

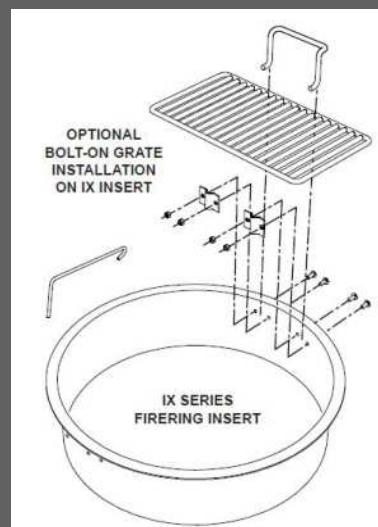
FIREPIT AS PICTURED ON LEFT:

42 - STANDARD NATURAL BLOCKS

14 - TUMBLED CHARCOAL BLOCKS

PYZIQUE ROUND RING W/ SINGLE GRATE

*COLORS MAY VARY DEPENDING ON THE
BLEND AND TIME OF PRODUCTION.*



OLD TOWN WALL

THE
CONCRETE
SERVICE,
INC.

BLUE STAR
LANDSCAPE
SUPPLY



WALL UNIT SPECIFICATIONS:

12" (LONG) X 4" (HEIGHT) X 8" (DEPTH)
.33 FACE FEET PER BLOCK
28 LBS PER BLOCK
96 UNITS PER PALLET
PALLET WEIGHT: 2,758 LBS

UNIT PRICING:

**SOLD PER PIECE

- \$4.31 EACH

AVAILABLE COLORS:



BUCKSKIN BLEND

CHARCOAL BLEND

DARK WALNUT

COLORS MAY VARY DEPENDING ON THE BLEND AND TIME OF PRODUCTION.

*REFUNDABLE PALLET CHARGES APPLY

FIREPITS

THE
CONCRETE
SERVICE,
INC.



PYZIQUE FIREPIT KIT:

50" OUTSIDE DIAMETER
30" INSIDE DIAMETER
HEIGHTS IN MULTIPLES OF 4"
14 BLOCKS PER LAYER

FIREPIT AS PICTURED ON LEFT:

42 - STANDARD NATURAL BLOCKS
14 - TUMBLED COLORED BLOCKS
PYZIQUE ROUND RING W/ SINGLE GRATE

SEE PAGE 6 & 7 FOR ADDITIONAL PYZIQUE INFORMATION & PRICING



OLD TOWN FIREPIT KIT:

39" X 39" OUTSIDE
23" X 23" INSIDE
HEIGHTS IN MULTIPLES OF 4"
11 BLOCKS PER LAYER

FIREPIT AS PICTURED ON LEFT:

44 - OLD TOWN BLOCKS
SQUARE INSERT
SINGLE GRATE FOR SQUARE

SEE PAGE 8 FOR ADDITIONAL OLD TOWN INFORMATION & PRICING

*CUTTING REQUIRED FOR OLD TOWN FIREPIT KIT



UNILOCK SUNSET FIREPIT KIT:

52" OUTSIDE DIAMETER
34" INSIDE DIAMETER
12" HEIGHT
PALLET WEIGHT: 1,125 LBS

(KITS COME WITH 6 EXTRA BLOCKS)

AVAILABLE COLORS: LIMESTONE
(PICTURED), COFFEE CREEK,
MAHOGANY ASH, SANDSTONE

FIREPITS

THE
CONCRETE
SERVICE,
INC.



BELVEDERE FIREPIT KIT:

58" OUTSIDE DIAMETER
37" INSIDE DIAMETER
14 1/2" HEIGHT
PALLET WEIGHT: 1,320 LBS

WOOD BURNING & GAS



NATURAL PAVING PROMENADE

60 1/2" OUTSIDE DIAMETER
36 1/2" INSIDE DIAMETER
17" HEIGHT
PALLET WEIGHT: 2,425 LBS
(WOOD BURNING)

*ALSO AVAILABLE IN
LAKELAND COLOR



ED'S LINEAR FIREPIT KIT

36 1/2" OUTSIDE DIAMETER
28" INSIDE DIAMETER
12" HEIGHT
PALLET WEIGHT: 610 LBS
8 BUILDING STONES + 4 TRIM
STONES
(WOOD BURNING)

AVAILABLE COLORS: WHITE,
SUNSET BUFF, OR EBONY

UNILOCK

THE
CONCRETE
SERVICE,
INC.



BRUSSELS BLOCK SOLD PER PIECE

PRODUCT DESCRIPTION	PRICE	UNIT SIZE	COVERAGE PER UNIT	COVERAGE PER PALLET	UNITS PER PALLET	PALLET WEIGHT
HALF STONE	\$6.85/SF	4" X 6 7/8" X 2 3/4" THICK	5.06 UNITS = 1SF	99.79SF	504 UNITS	3195 LBS
STANDARD STONE	\$6.85/SF	6 7/8" X 8 1/4" X 2 3/4" THICK	2.53 UNITS = 1SF	95.94 SF	240 UNITS	3064 LBS
XL STONE	\$6.85/SF	8 1/4" X 13 3/4" X 2 3/4" THICK	1.26 UNITS = 1SF	95.94 SF	120 UNITS	3072 LBS

AVAILABLE COLORS: LIMESTONE, SANDSTONE, COFFEE CREEK, MAHOGANY ASH, DARK CHARCOAL (HALF STONES ONLY)

TURFSTONE SOLD PER PIECE

PRODUCT DESCRIPTION	PRICE	UNIT SIZE	COVERAGE PER UNIT	COVERAGE PER PALLET	UNITS PER PALLET	PALLET WEIGHT
STANDARD TURFSTONE	\$440/SF \$11.00 EA.	15 3/4" X 23 5/8" X 3 1/8" THICK	1 UNITS = 2.5SF	80SF	32 UNITS	1975 LBS

AVAILABLE COLORS: NATURAL

BEACON HILL SOLD PER LAYER -SMALL RECTANGLE SOLD BY PIECE

PRODUCT DESCRIPTION	PRICE	UNIT SIZE	COVERAGE PER UNIT	COVERAGE PER PALLET	UNITS PER PALLET	PALLET WEIGHT
RANDOM BUNDLE	\$7.68/SF \$89.55/LAY	RANDOM BUNDLE	11.66SF	104.91SF	9 LAYERS	2879 LBS
SMALL RECTANGLES	\$5.95EA.	15" X 7 1/2" X 2 3/8" THICK	.69/SF	104.91SF	9 LAYERS	2879 LBS

AVAILABLE COLORS: FOSSIL FLAG & FOSSIL SMOOTH, SIERRA FLAG, CHARCOAL SMOOTH (SMALL RECT. ONLY)

BRUSSELS DIMENSIONAL WALL SOLD PER PIECE

PRODUCT DESCRIPTION	PRICE	UNIT SIZE	COVERAGE PER UNIT	COVERAGE PER PALLET	UNITS PER PALLET	PALLET WEIGHT
STANDARD	\$6.90EA.	8" X 12" X 4" THICK	1 UNITS = .33SF	32SF	96 UNITS	3261 LBS

AVAILABLE COLORS: LIMESTONE, SANDSTONE, COFFEE CREEK, MAHAGONY ASH



*SEE BACK OF CATALOG FOR LAYING PATTERNS

*REFUNDABLE PALLET CHARGES APPLY

FENDT

THE
CONCRETE
SERVICE,
INC.



HOLLAND SOLD PER PIECE

PRODUCT DESCRIPTION	PRICE	UNIT SIZE	COVERAGE PER UNIT	COVERAGE PER PALLET	UNITS PER PALLET	PALLET WEIGHT
STANDARD COLORS	\$4.14/SF	8" X 4" X 2.36" THICK	4.5 UNITS = 1SF	108SF	486 UNITS	3024 LBS
JET BLACK COLOR	\$6.02/SF	8" X 4" X 2.36" THICK	4.5 UNITS = 1SF	108SF	486 UNITS	3024 LBS

OLD WORLD HOLLAND SOLD PER PIECE

PRODUCT DESCRIPTION	PRICE	UNIT SIZE	COVERAGE PER UNIT	COVERAGE PER PALLET	UNITS PER PALLET	PALLET WEIGHT
STANDARD COLORS	\$6.66/SF	8" X 4" X 2.36" THICK	4.5 UNITS = 1SF	108SF	486 UNITS	3024 LBS

STANDARD COLORS: ANTIQUE, LIMESTONE, SLATE, WALNUT *OTHER COLORS AVAILABLE VIA SPECIAL ORDER



TRIPLE H

THE
CONCRETE
SERVICE,
INC.

COVINGTON SOLD PER PIECE

*SEE BACK OF CATALOG FOR LAYING PATTERNS

PRODUCT DESCRIPTION	PRICE	UNIT SIZE	COVERAGE PER UNIT	COVERAGE PER PALLET	UNITS PER PALLET	PALLET WEIGHT
MEGA	\$3.68/SF \$8.10 EA.	17.71 X 17.71 X 2.36" THICK	1 UNITS = 2.2 SF	83.6 SF	38 UNITS	2309 LBS
LARGE	\$3.60/SF \$5.22 EA.	11.81' X 17.71" X 2.36" THICK	1 UNITS = 145 SF	82.65 SF	57 UNITS	2223 LBS
MEDIUM	\$3.59/SF \$345 EA.	11.81" X 11.81" X 2.36" THICK	1 UNITS = .96 SF	109.44 SF	114 UNITS	3078 LBS
SMALL	\$3.58/SF \$1.72 EA.	5.9" X 11.81" X 2.36" THICK	1 UNITS = .48 SF	72.96 SF	152 UNITS	2052 LBS

AVAILABLE COLORS: SLATE, BEIGE

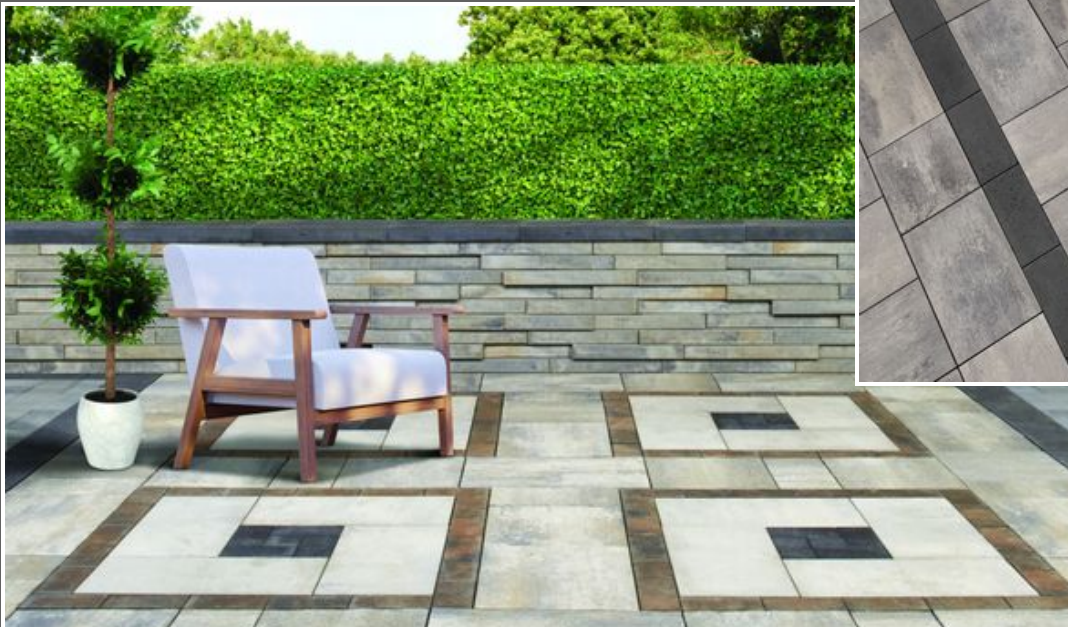
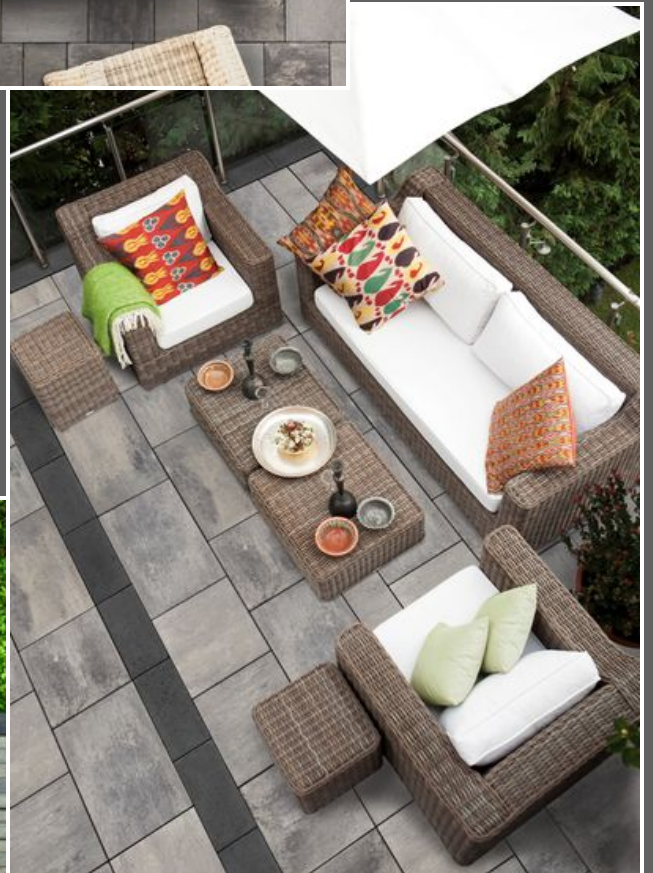
PAVERS SOLD PER PIECE

PRODUCT DESCRIPTION	PRICE	UNIT SIZE	COVERAGE PER UNIT	COVERAGE PER PALLET	UNITS PER PALLET	PALLET WEIGHT
BRICK PATTERN SAHARA	\$7.25 EA.	19.68" X 19.68" X 1.57" THICK	1 UNITS = 2.68SF	160.8SF	60 UNITS	2826 LBS
EURO PATTERN RED RANGE	\$7.25 EA.	19.68" X 19.68" X 1.57" THICK	1 UNITS = 2.68SF	160.8SF	60 UNITS	2826 LBS
DIAMOND CAST 18"	\$7.35 EA.	18" X 18" X 1.57" THICK	1 UNITS = 2.18SF	130.8SF	60 UNITS	2250 LBS
DIAMOND CAST 24"	\$10.50 EA.	23.62" X 23.62" X 1.57" THICK	1 UNITS = 3.87SF	116.1SF	30 UNITS	2040 LBS
MAPLE WOOD LOG STEPPERS	\$1045 EA.	14" DIAMETER 1.5" THICK	N/A	N/A	54 UNITS	1070 LBS



OAKS

BLUE STAR
LANDSCAPE
SUPPLY



TECHO-BLOC

BLUE STAR
LANDSCAPE
SUPPLY



TECHO-BLOC



GLEN-GERY

THE
CONCRETE
SERVICE,
INC.



CLAY PAVERS SOLD PER PIECE

PRODUCT DESCRIPTION	PRICE	UNIT SIZE	COVERAGE PER UNIT	COVERAGE PER PALLET	UNITS PER PALLET	PALLET WEIGHT
COVINGTON, ALBANY, & JAMESTOWN	\$1.65EA.	3.63" X 7.63" X 2.25" THICK	5.2 UNITS = 1SF	101SF	525 UNITS	2468 LBS
EDL BROWN & STEEL CITY	\$1.40EA.	4" X 8" X 2.25" THICK	4.5 UNITS = 1SF	104.5SF	470 UNITS	2961 LBS



NATURAL PAVING USA

THE
CONCRETE
SERVICE,
INC.



CLASSICSTONE SOLD FULL PALLETS OR PER PIECE (24" X 24" ONLY) *SEE BACK OF CATALOG FOR LAYING PATTERNS

PRODUCT DESCRIPTION	PRICE	SIZE <small>*ALL 1" CALIBRATED THICKNESS*</small>	COVERAGE PER PALLET	PALLET WEIGHT
PROMENADE- PREMIUM	\$1144/SF	36"X 24", 24"X24", 24"X12", 11 3/4" X 11 3/4"	205 SF	2250 LBS
GOLDEN FOSSIL	\$10.85/SF	36"X 24", 24"X24", 24"X12", 11 3/4" X 11 3/4"	205 SF	2250 LBS
LAKELAND	\$10.85/SF	36"X 24", 24"X24", 24"X12", 11 3/4" X 11 3/4"	205 SF	2250 LBS
PROMENADE-PREMIUM	\$49.60/EA.	24" X 24"	176 SF	2000 LBS
GOLDEN FOSSIL	\$45.44/EA.	24" X 24"	176 SF	2000 LBS
LAKELAND	\$45.76/EA.	24" X 24"	176 SF	2000 LBS

MATCHING PRODUCTS AVAILABLE:

-ADDITIONAL COLORS: HARVEST,
PLATINUM, CHARCOAL, GRAPHITE
-ADDITIONAL PAVER STYLES
-TREADS
-DRIVEWAY PAVERS
-PIER COPING

-FIREPIT KITS
-VENEERS
-COUNTERTOPS

-STEP TREADS
-SLABS
-COPING
-CIRCLE KITS

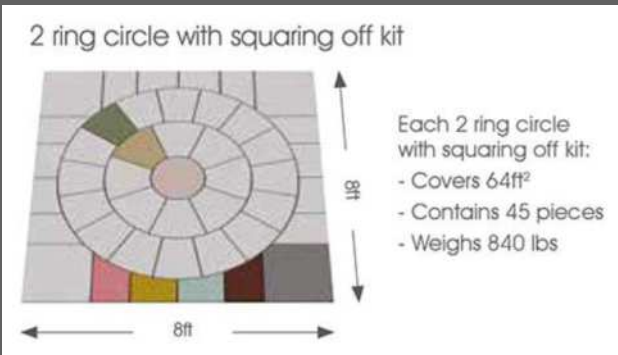


NATURAL PAVING USA

THE
CONCRETE
SERVICE,
INC.

PAVETUF JOINTING COMPOUND:

WE OFFER ALL WEATHER GREY AND BUFF. THIS JOINTING COMPOUND IS RECOMMENDED TO BE USED WITH NATURAL PAVING. CAN BE APPLIED IN ALMOST, ALL WEATHER CONDITIONS. COVERAGE +/- 160 SQ. FT. CAN BE APPLIED IN JOINTS RANGING FROM 1/8" - 3/4". 33LB TUB PRICED AT \$70.67/EA.



CLASSICSTONE COLORS:



STEP TREAD COLORS:



DE TERRA COLORS:



HIGH FORMAT

THE
CONCRETE
SERVICE,
INC.

BLUE STAR
LANDSCAPE
SUPPLY

PAVERS SOLD PER LAYER - SUPERIOR STEPPERS SOLD BY PIECE

PRODUCT DESCRIPTION	PRICE	UNIT SIZE	COVERAGE PER LAYER	COVERAGE PER PALLET	LAYERS PER PALLET	PALLET WEIGHT
DIMENSIONAL FLAGSTONE	\$9.90/SF \$121.27/LAY	ASSORTED SIZES 2" THICK	12.25 SF	98 SF	8 LAYERS	2350 LBS
GRAND FLAGSTONE	\$9.90/SF \$111.37/LAY	ASSORTED SIZES 1 3/4" THICK	11.25 SF	90 SF	8 LAYERS	2000 LBS
SUPERIOR STEPPERS	\$36.55 EA.	21" X 21" X 2" THICK		16 PCS		1300 LBS

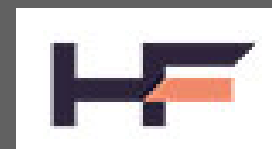
DIMENSIONAL & IRREGULAR STEPS SOLD BY PIECE

SIZE	PRICE	STEPS PER PALLET	PALLET WEIGHT
3' X 18" X 7"	\$130.35	8 STEPS	3050 LBS
4' X 18" X 7"	\$154.28	8 STEPS	4050 LBS
4' X 24" X 7"	\$176.55	4 STEPS	2750 LBS
6' X 30" X 7"	\$226.05	3 STEPS	4000 LBS
6' IRREGULAR	\$226.05	3 STEPS	3900 LBS
7" IRREGULAR	\$176.55	8 STEPS	4200 LBS

AVAILABLE COLORS: FOND DU LAC & SLATE GRAY. SPECIAL ORDER ONLY - LIMESTONE

BLUESTONE (\$10.64/SF) AVAILABLE BY SPECIAL ORDER- DIMENSIONAL FLAGSTONE ONLY

EXTENDED LEAD TIMES POSSIBLE - PLEASE CALL FOR AVAILABILITY ON ALL HIGH FORMAT PRODUCTS



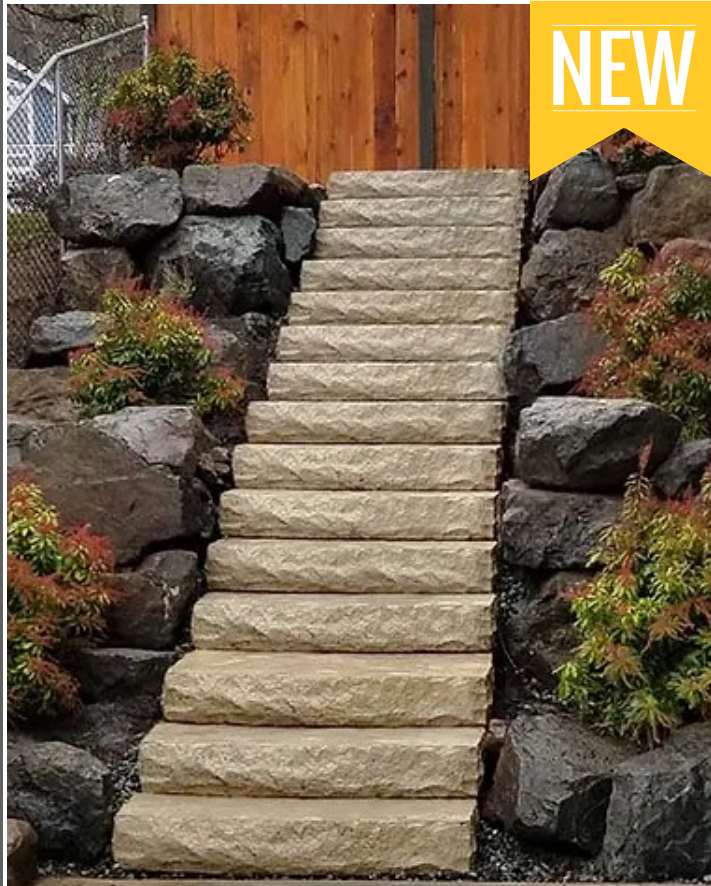
INTRODUCING:

THE
CONCRETE
SERVICE,
INC.

BLUE STAR
LANDSCAPE
SUPPLY

ED'S CONCRETE PRODUCTS

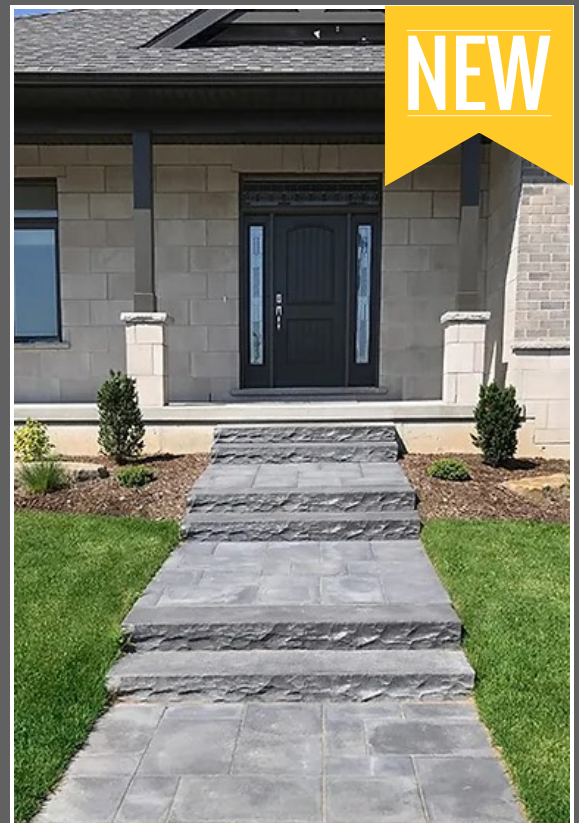
CANYON STEPS PICTURED:



RANDOM STEPS PICTURED:



CHISEL STEPS PICTURED:



IN STOCK COLORS: SUNSET BUFF AND EBONY



SUNSET BUFF EBONY

CHISEL STEP COLORS: SUNSET BUFF AND EBONY.
GRANITE SPECIAL ORDER ONLY.



SUNSET BUFF GRANITE EBONY

DIMENSIONAL & RANDOM STEPS SOLD PER PIECE

PRODUCT DESCRIPTION	SIZE	PRICE	STEPS PER PALLET	PALLET WEIGHT
CANYON (HOLLOW)	3' X 16" X 7"	\$105.12	6 STEPS	1140 LBS
CANYON (HOLLOW)	4' X 15 1/2" X 7"	\$120.96	6 STEPS	1440 LBS
CHISEL (HOLLOW)	4' X 13 1/4" X 7 1/2"	\$134.72	12 STEPS	2280 LBS
CHISEL (HOLLOW)	4' X 25" X 7 1/2"	\$162.88	6 STEPS	1920 LBS
RANDOM (SOLID)	40" X 30" X 5 1/2"	\$140.80	3 STEPS	1260 LBS

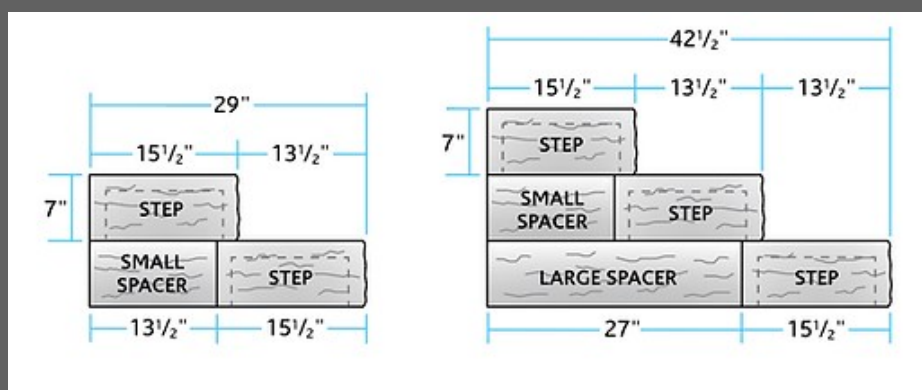
AVAILABLE COLORS: SUNSET BUFF & EBONY.

GRANITE IS AVAILABLE ONLY FOR CHISEL STEPS (SPECIAL ORDER)

CANYON STEP SPACERS SOLD PER PIECE

SIZE	PRICE
4 1/2" X 13 1/2" X 7"	\$19.36/EA.
4 1/2" X 27 X 7"	\$28.00/EA.

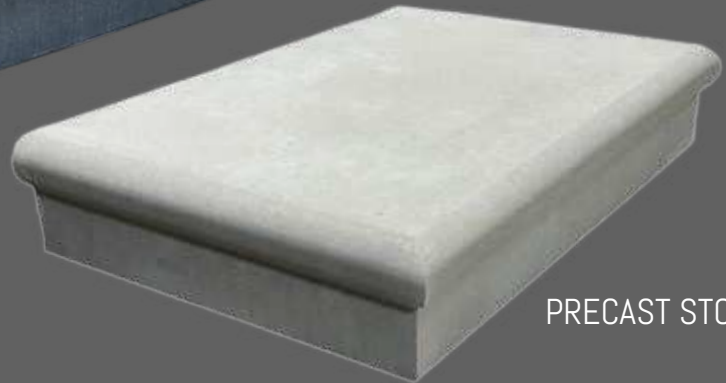
AVAILABLE COLORS: SUNSET BUFF & EBONY.



PRECAST STEPS & STOOPS

PRODUCT DESCRIPTION	PRICE
36" X 7" X 12" PRECAST STEP	\$70.50/EA
48" X 7" X 12" PRECAST STEP	\$93.95/EA
36" X 7" X 24" PRECAST STOOP	\$177.85/EA
48" X 7" X 24" PRECAST STOOP	\$237.15/EA

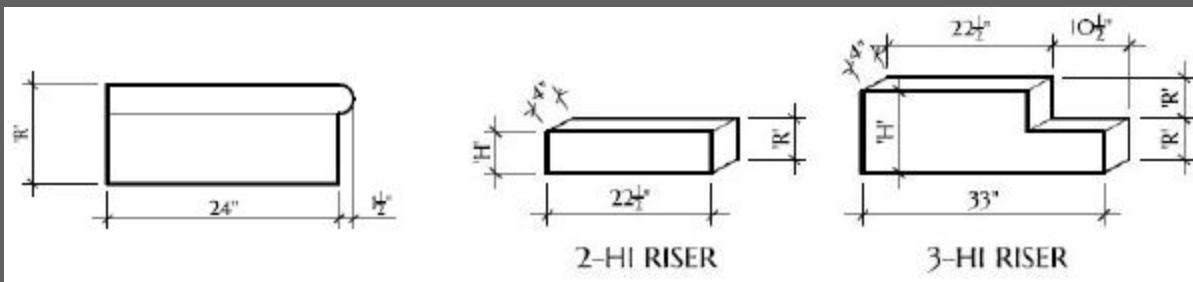
PRECAST STEP



PRECAST STOOP

PRECAST RISERS

PRODUCT DESCRIPTION	PRICE
2 HIGH END SET- FOR STEPS	\$19.50/PAIR
3 HIGH END SET- FOR STEPS	\$30.60/PAIR
2 HIGH END SET- FOR STOOPS	\$29.15/PAIR
3 HIGH END SET- FOR STOOPS	\$46.05/PAIR



NATURAL STONE

THE
CONCRETE
SERVICE,
INC.

BLUE STAR
LANDSCAPE
SUPPLY

IRREGULAR FLAGSTONE SOLD PER TON

PRODUCT DESCRIPTION	PRICE /TON	APPROX. COVERAGE PER TON	APPROX. \$/SF
CHILTON FLAGSTONE (1 3/4" - 2 1/2")	\$660.00	85 SF	\$7.76
FOND DU LAC SILVER FLAGSTONE (1 1/2" - 2 1/2")	\$995.00	85 SF	\$11.71
IDAHO SILVER/GOLD FLAGSTONE "THICK" (1" - 1 1/2")	\$540.00	90 SF	\$6.00
IDAHO SILVER/GOLD FLAGSTONE "THIN" (1/2" - 3/4")	\$680.00	245 SF	\$2.78
IDAHO COWBOY COFFEE FLAGSTONE "THICK" (1" - 1 1/2")	\$605.00	115 SF	\$4.65
IDAHO COWBOY COFFEE FLAGSTONE "THIN" (1/2" - 3/4")	\$855.00	245 SF	\$3.24
FULL COLOR FLAGSTONE "THIN" (3/4" - 1 1/2")	\$463.00	90 SF	\$5.14
FULL COLOR FLAGSTONE "THICK" (1 1/4" - 2")	\$489.00	85 SF	\$5.45

PATTERNED FLAGSTONE SOLD PER PALLET

PRODUCT DESCRIPTION	PRICE /SF	SIZE	COVERAGE PER PALLET
FULL COLOR NATURAL CLEFT (1 1/2")	\$9.60	RANDOM QTY. MIXED SIZES	140 - 160 SF
SELECT BLUE NATURAL CLEFT (1 1/2")	\$12.15	RANDOM QTY. MIXED SIZES	140 - 160 SF
VALDERS RUSTIC BUFF (1 5/8")	\$14.25	6"X6" - 18"X18" SEE PG. 26	100 SF

NOTE: NATURAL CLEFT SURFACES WILL VARY +/-1". AVAILABILITY ON PATTERNED FULL COLOR AND SELECT BLUE IS LIMITED - PLEASE CALL FOR CURRENT AVAILABILITY AND LEAD TIME.

TUMBLLED FLAGSTONE SOLD PER PIECE OR PER TON (IRREGULAR ONLY)

PRODUCT DESCRIPTION	PRICE	SIZE	PRICE/SF
SELECT BLUE TUMBLLED	\$16.20 EA.	12" X 12" X 2" THICK	\$16.20
SELECT BLUE TUMBLLED	\$8.10 EA.	6" X 12" X 2" THICK	\$16.20
SELECT BLUE TUMBLLED	\$4.15 EA.	6" X 6" X 2" THICK	\$16.60
SELECT BLUE IRREGULAR TUMBLLED	\$353.00/TON	IRREGULAR +/- 2" THICK APPROX. 70SF/TON	APPROX. \$5.04

STEPPERS & SHIMS SOLD PER TON

PRODUCT DESCRIPTION	PRICE /TON	APPROX. COVERAGE PER TON	APPROX. \$/SF
CHILTON STEPPERS (1" - 2")	\$424.00	85 SF	\$4.99
FOND DU LAC STEPPERS (1" - 2")	\$443.00	85 SF	\$5.21
CHILTON SHIMS	\$230.00	35 FF	\$6.80/FF
FOND DU LAC SHIMS	\$230.00	35 FF	\$6.80/FF

WALLSTONE & BORDER EDGE SOLD PER TON

PRODUCT DESCRIPTION	SIZE	PRICE /TON	APPROX. COVERAGE/TON
CHILTON CUT DRYWALL	8" X 3" - 4" X RANDOM LENGTHS	\$383.00	15-20 FF
FOND DU LAC CUT DRYWALL	8" X 3" - 4" X RANDOM LENGTHS	\$427.00	15-20 FF
CHILTON BORDER EDGE	4" X 4" X RANDOM LENGTHS	\$555.00	110 LF
FOND DU LAC SILVER BORDER EDGE	4" X 4" X RANDOM LENGTHS	\$565.00	110 LF



PRE-CUT STEPS SOLD PER PIECE

PRODUCT DESCRIPTION	SIZE	PRICE
FOND DU LAC	18" X 36" X 5"-7"	\$220.00
FOND DU LAC	18" X 48" X 5"-7"	\$325.00
CHILTON	18" X 36" X 5"-7"	\$205.00
CHILTON	18" X 48" X 5"-7"	\$300.00
CHILTON W/E	18" X 36" X 5"-7"	\$330.00
CHILTON W/E	18" X 48" X 5"-7"	\$435.00
NY FULL COLOR OUTCROP	VARIED LENGTHS 6"-8" THICKNESS	\$440.00



SHADE AND SIZE VARIATIONS WILL OCCUR IN ALL NATURAL STONE PRODUCTS.
 Natural stone has a high random shade and texture variation as it is naturally composed of hardened minerals over millions of years.
 This is the unique natural beauty that you get with natural stone.

COVINGTON LAYING PATTERNS



PATTERN A

50% - LARGE
34% - MEDIUM
16% - SMALL



PATTERN B

37% - LARGE
50% - MEDIUM
13% - SMALL



PATTERN C

36% - MEGA
24% - LARGE
32% - MEDIUM
8% - SMALL



PATTERN D

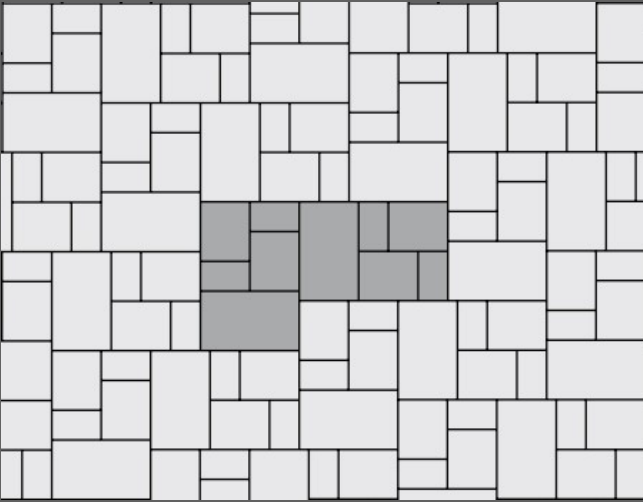
42.9% - LARGE
28.6% - MEDIUM
28.5% - SMALL



PATTERN E

55% - LARGE
36% - MEDIUM
9% - SMALL

BRUSSELS LAYING PATTERNS

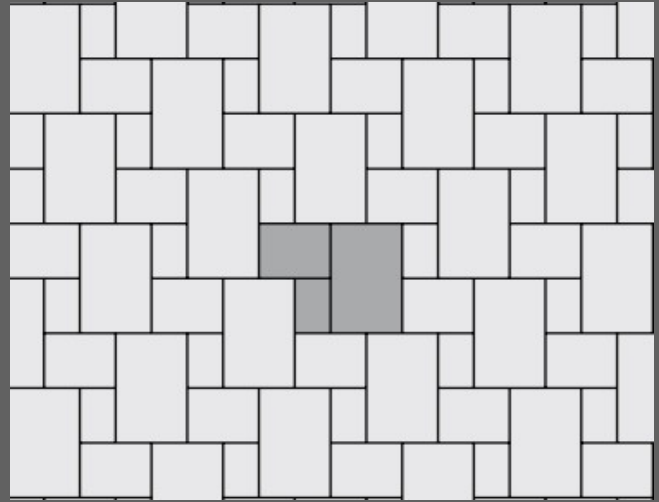


PATTERN AF

20% - HALF STONES

40% - STANDARD

40% - XL



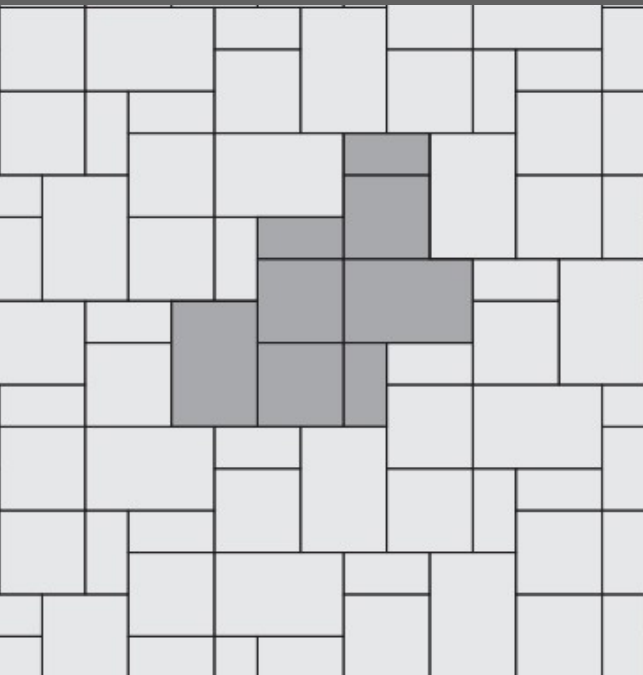
PATTERN Y

14% - HALF STONES

29% - STANDARD

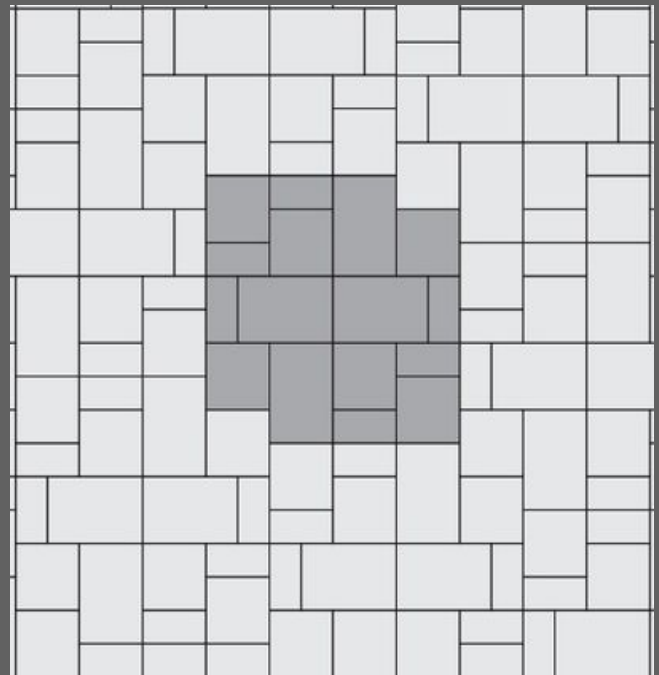
57% - XL

BEACON HILL LAYING PATTERNS



PATTERN A

GOES WITH RANDOM BUNDLE



PATTERN B

GOES WITH RANDOM BUNDLE

DELIVERY

HARDSCAPE (PALLETIZED PRODUCTS OR BOXED GRAVELS)

0-10 MILES	\$110.00
11-20 MILES	\$130.00
21-30 MILES	\$150.00
31-40 MILES	\$180.00
41-50 MILES	\$210.00
51-60 MILES	\$240.00
61-70 MILES	\$290.00
71-80 MILES	\$340.00
81 + MILES	CALL FOR PRICING

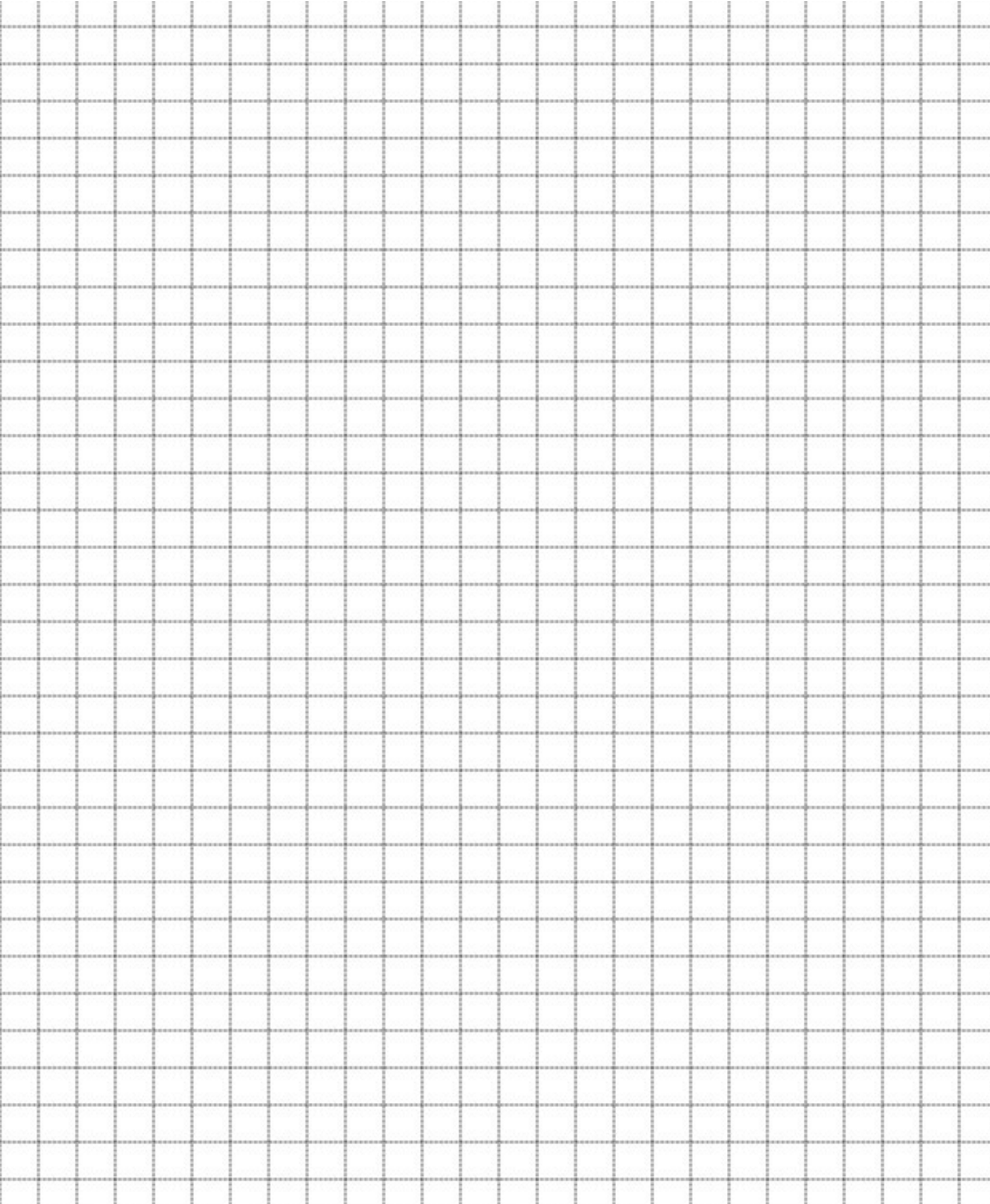
GRAVEL

0-5 MILES	\$100.00
6-10 MILES	\$110.00
11-15 MILES	\$120.00
16-20 MILES	\$130.00
21-25 MILES	\$150.00
26-30 MILES	\$170.00
31-35 MILES	\$200.00
36-40 MILES	\$230.00
40+ MILES	CALL FOR PRICING

ADDITIONAL FUEL SURCHARGES MAY OCCUR DURING TIMES OF HIGH FUEL COST



NOTES:



THE CONCRETE SERVICE, INC.



BLUE STAR
LANDSCAPE
SUPPLY

DESIGNER'S
CHOICE STONE

**THE
CONCRETE
SERVICE,
INC.**



We are Northern Michigan's premier supplier of stone, masonry and hardscape materials.

ALL PRICES SUBJECT TO CHANGE WITHOUT NOTICE

SHOWROOM

3743 West Front Street, Traverse City Michigan

231.946.7880

www.THECONCRETESERVICE.com

Find us on Social Media!



The Concrete Service, Inc.

@THECONCRETESERVICE