

# THE CONCRETE SERVICE, INC.



**THE  
CONCRETE  
SERVICE,  
INC.**

## 2023 HARDSCAPE PRICELIST

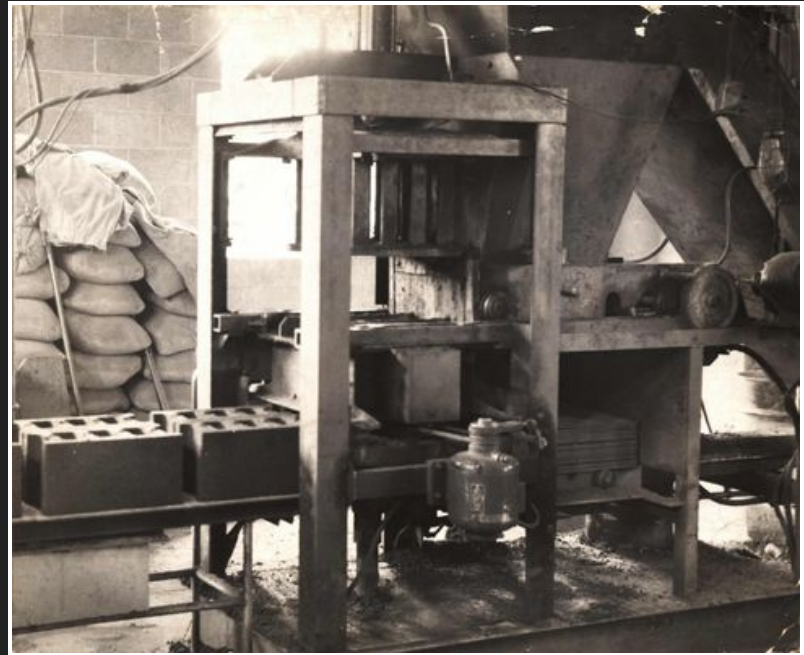
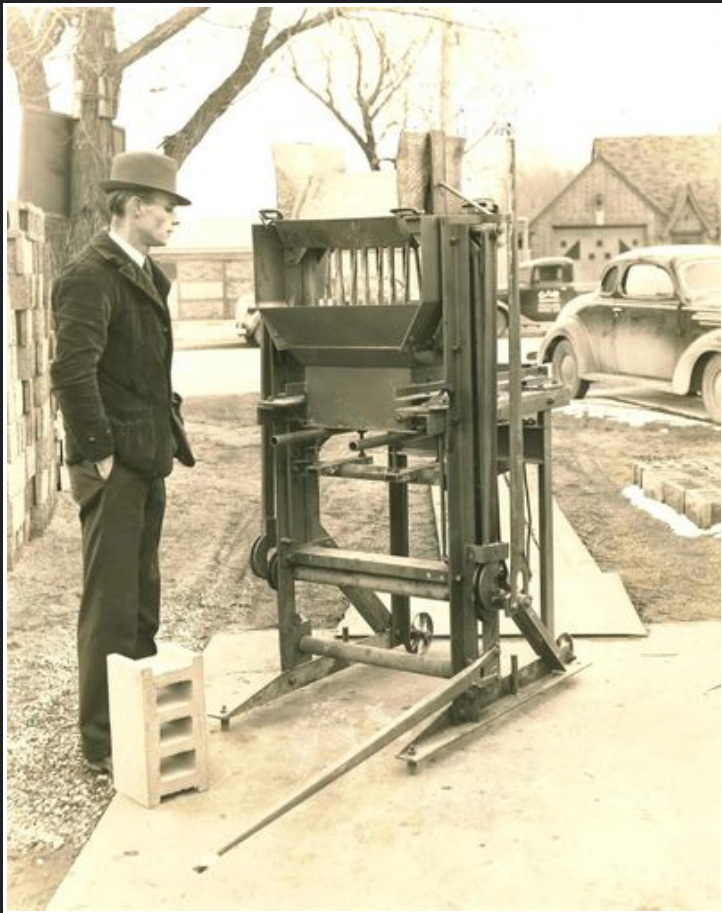
# CONTENTS

|             |                                 |
|-------------|---------------------------------|
| PAGES 4-5   | VERSA-LOK                       |
| PAGES 6-7   | PYZIQUE                         |
| PAGES 8     | OLD TOWN WALL                   |
| PAGES 9-10  | FIREPITS                        |
| PAGES 11-12 | UNILOCK                         |
| PAGES 13    | OAKS                            |
| PAGES 14    | FENDT                           |
| PAGES 15    | TRIPLE H                        |
| PAGES 16-17 | TECHO-BLOC                      |
| PAGES 18    | GLEN GERY                       |
| PAGES 19    | HIGH FORMAT                     |
| PAGES 20    | STEPS                           |
| PAGES 21-22 | NATURAL PAVING USA              |
| PAGES 23-24 | NATURAL STONE                   |
| PAGES 25    | LAYING PATTERNS / PRECAST STEPS |
| PAGES 26    | LAYING PATTERNS                 |
| PAGES 27    | DELIVERY                        |
| BACK COVER  | BEAUTY BEYOND CONCRETE          |





Proudly serving the Traverse City region for over  
90 years.

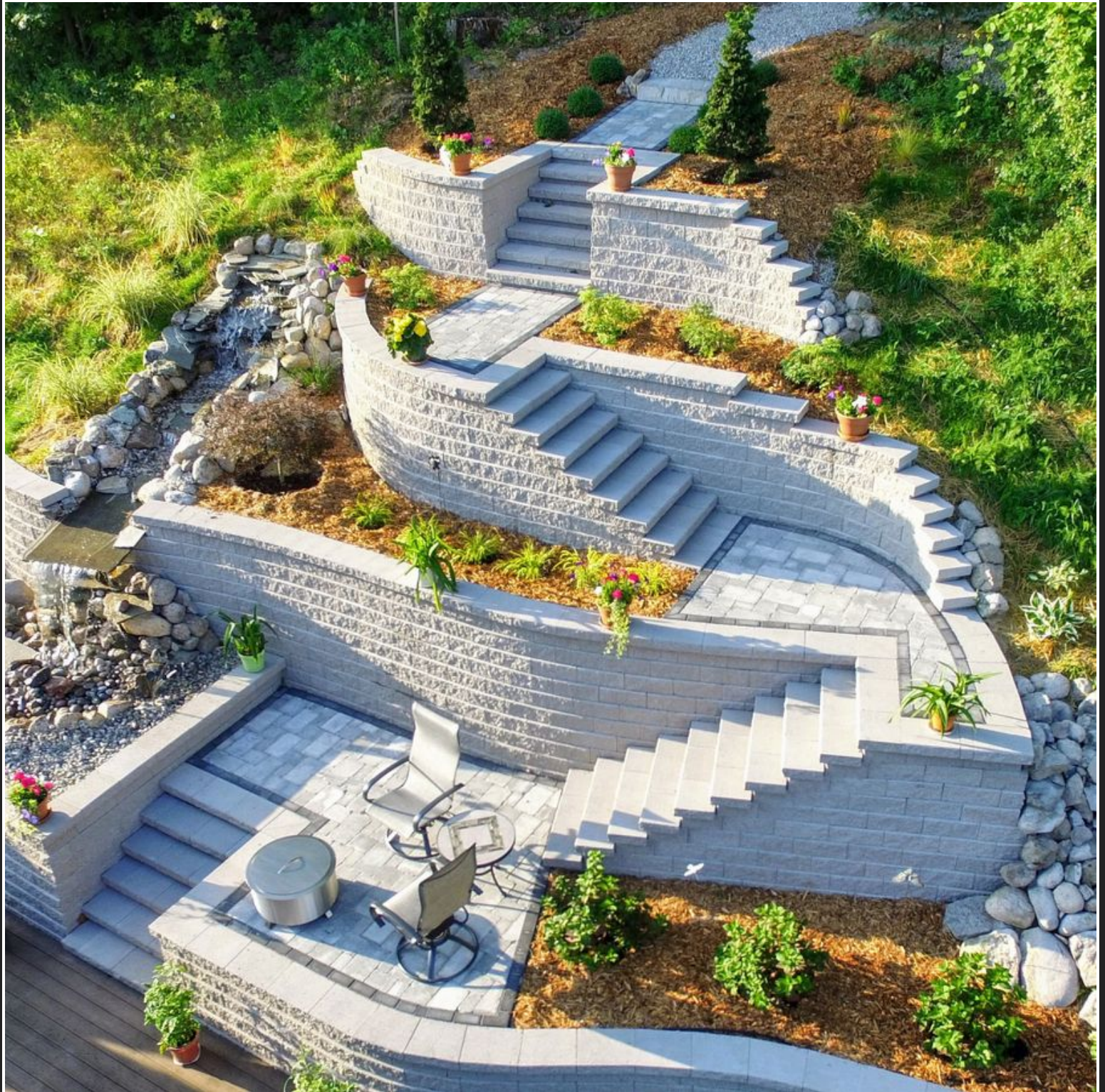


**THE  
CONCRETE  
SERVICE,  
INC.**



# VERSA-LOK

THE  
CONCRETE  
SERVICE,  
INC.





### WALL UNIT SPECIFICATIONS:

16" (FACE) X 14" (BACK) X 6" (HEIGHT) X 12" (DEPTH)  
.67 FACE FEET PER BLOCK  
82 LBS PER BLOCK  
48 UNITS PER PALLET  
PALLET WEIGHT: 3,936LBS



### CAP UNIT SPECIFICATIONS:

16" (FACE) X 16" (BACK) X 3 5/8" (HEIGHT) X 12" (DEPTH)  
40 FACE FEET PER BLOCK  
50 LBS PER BLOCK  
96 UNITS PER PALLET  
PALLET WEIGHT: 4,800LBS



### STANDARD UNIT PRICING:

\*\*SOLD PER PIECE

NATURAL BLOCK - \$6.70  
COLORED BLOCK - \$7.22

NATURAL CAP - \$5.20  
COLORED CAP - \$5.57



### AVAILABLE COLORS:

EARTH BLEND  
CHARCOAL BLEND  
BUCKSKIN BLEND  
ANTIQUE BLEND  
NATURAL

### TUMBLED UNIT PRICING:

\*\*SOLD PER PIECE

NATURAL BLOCK - \$9.40  
COLORED BLOCK - \$10.20

NATURAL CAP - \$9.40  
TUMBLED CAP - \$10.20



\*ALL COLORS  
AVAILABLE IN BOTH  
STANDARD &  
TUMBLED  
UNITS\*

### ACCESSORIES:

|                                     |                          |
|-------------------------------------|--------------------------|
| VERSA-LOK PINS (2 PER BLOCK)        | - \$0.27 EACH            |
| VERSA-GRID 3.0                      | - \$2.58 PER LINEAR FOOT |
| VERSA-GRID 5.0                      | - \$2.87 PER LINEAR FOOT |
| VERSA-LIFTERS (DEPOSIT OR PURCHASE) | - \$89.95 EACH           |
| VERSA-SPLITTER RENTAL               | - \$35.00 PER DAY        |
| SRW ADHESIVE 10.50Z(FOR CAPS)       | - \$6.90 EACH            |
| SRW ADHESIVE 280Z                   | - \$13.95 EACH           |



# PYZIQUE

THE  
CONCRETE  
SERVICE,  
INC.



## PYZIQUE FIREPIT KITS:

50" OUTSIDE DIAMETER

30" INSIDE DIAMETER

HEIGHTS IN MULTIPLES OF 4"

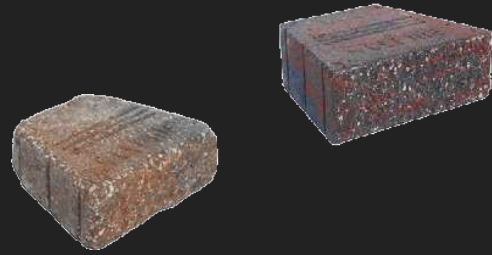
14 BLOCKS PER LAYER

Firepits can be customized with mixed and matched colors and textures. Shown is a Standard Natural firepit with a Tumbled Charcoal Blend accent band/layer. Common height for a firepit is 16" (4 layers), but Pyzique's easy no-cut installation allows you to add or subtract layers as needed to fit your specific needs.



### WALL UNIT SPECIFICATIONS:

11" (FACE) X 7" (BACK) X 4" (HEIGHT) X 9" (DEPTH)  
.31 FACE FEET PER BLOCK  
25 LBS PER BLOCK  
150 UNITS PER PALLET  
PALLET WEIGHT: 3,750 LBS



### STANDARD UNIT PRICING:

\*\*SOLD PER PIECE

NATURAL BLOCK - \$1.85  
COLORED BLOCK - \$2.21



### AVAILABLE COLORS:

EARTH BLEND

CHARCOAL BLEND

BUCKSKIN BLEND

ANTIQUE BLEND

NATURAL

\*ALL COLORS  
AVAILABLE IN BOTH  
STANDARD &  
TUMBLED  
UNITS\*

### TUMBLED UNIT PRICING:

\*\*SOLD PER PIECE

NATURAL BLOCK - \$3.80  
COLORED BLOCK - \$4.10



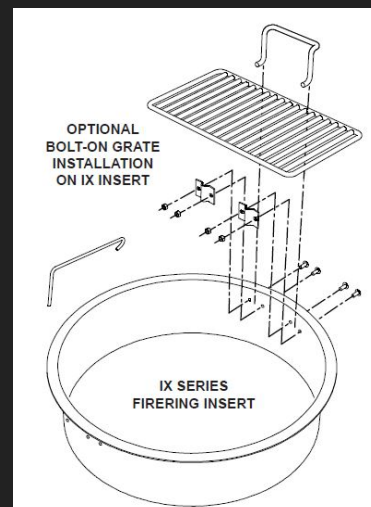
\*FOR CAP OPTION VIEW VERSA-LOK CAPS\*

### ACCESSORIES:

|                           |            |
|---------------------------|------------|
| PYZIQUE ROUNG RING INSERT | - \$209.00 |
| PYZIQUE ROUND GRATE       | - \$124.00 |
| PYZIQUE GRILL GOVER FLAT  | - \$209.00 |
| PYZIQUE FIRESCREEN        | - \$446.00 |

### FIREPIT AS PICTURED ON LEFT:

42 - STANDARD NATURAL BLOCKS  
14 - TUMBLED COLORED BLOCKS  
PYZIQUE ROUND RING W/ SINGLE GRATE



# OLD TOWN WALL

THE  
CONCRETE  
SERVICE,  
INC.



## WALL UNIT SPECIFICATIONS:

12" (LONG) X 4" (HEIGHT) X 8" (DEPTH)  
.33 FACE FEET PER BLOCK  
28 LBS PER BLOCK  
96 UNITS PER PALLET  
PALLET WEIGHT: 2,758 LBS

## UNIT PRICING:

\*\*SOLD PER PIECE

- \$4.10 EACH

## AVAILABLE COLORS:



BUCKSKIN BLEND



DARK WALNUT



CHARCOAL BLEND



# FIREPITS

THE  
CONCRETE  
SERVICE,  
INC.



## PYZIQUE FIREPIT KIT:

50" OUTSIDE DIAMETER  
30" INSIDE DIAMETER  
HEIGHTS IN MULTIPLES OF 4"  
14 BLOCKS PER LAYER

## FIREPIT AS PICTURED ON LEFT:

42 - STANDARD NATURAL BLOCKS  
14 - TUMBLED COLORED BLOCKS  
PYZIQUE ROUND RING W/ SINGLE GRATE

SEE PAGE 6 & 7 FOR ADDITIONAL PYZIQUE INFORMATION & PRICING



## OLD TOWN FIREPIT KIT:

39" X 39" OUTSIDE  
23" X 23" INSIDE  
HEIGHTS IN MULTIPLES OF 4"  
11 BLOCKS PER LAYER

## FIREPIT AS PICTURED ON LEFT:

44 - OLD TOWN BLOCKS  
SQUARE INSERT  
SINGLE GRATE FOR SQUARE

SEE PAGE 8 FOR ADDITIONAL OLD TOWN INFORMATION & PRICING

\*CUTTING REQUIRED FOR OLD TOWN FIREPIT KIT



## UNILOCK SUNSET FIREPIT KIT:

52" OUTSIDE DIAMETER  
34" INSIDE DIAMETER  
12" HEIGHT  
PALLET WEIGHT: 1,125LBS

(KITS COME WITH 6 EXTRA BLOCKS)

**AVAILABLE COLORS:** LIMESTONE  
(PICTURED), COFFEE CREEK,  
MAHOGANY ASH, SANDSTONE



# FIREPITS

THE  
CONCRETE  
SERVICE,  
INC.



## BELVEDERE FIREPIT KIT:

58" OUTSIDE DIAMETER  
37" INSIDE DIAMETER  
14 1/2" HEIGHT  
PALLET WEIGHT: 1,320LBS

WOOD BURNING & GAS



## NATURAL PAVING PROMENADE

60 1/2" OUTSIDE DIAMETER  
36 1/2" INSIDE DIAMETER  
17" HEIGHT  
PALLET WEIGHT: 2,425LBS  
(WOOD BURNING)

\*ALSO AVAILABLE IN  
LAKELAND COLOR



## MARMIRO GRANO TRAVERTINE

52" OUTSIDE DIAMETER  
36" INSIDE DIAMETER  
12" HEIGHT  
PALLET WEIGHT: 1,160LBS

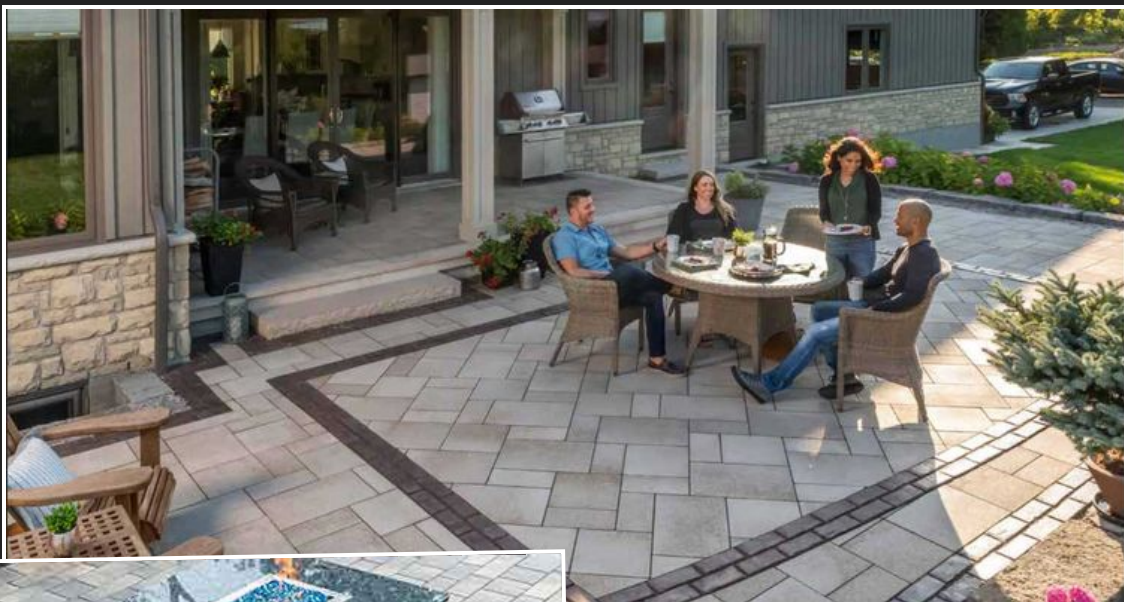
(WOOD BURNING)

\*ALSO AVAILABLE IN 18"  
HEIGHTS, DEEP BLUE &  
CREMA EDA COLORS



# UNILOCK

THE  
CONCRETE  
SERVICE,  
INC.





## BRUSSELS BLOCK

SOLD PER PIECE

\*SEE BACK OF CATALOG FOR LAYING PATTERNS

| PRODUCT DESCRIPTION | PRICE     | UNIT SIZE                       | COVERAGE PER UNIT | COVERAGE PER PALLET | UNITS PER PALLET | PALLET WEIGHT |
|---------------------|-----------|---------------------------------|-------------------|---------------------|------------------|---------------|
| HALF STONE          | \$6.64/SF | 4" X 6 7/8" X 2 3/4" THICK      | 5.06 UNITS = 1SF  | 99.79SF             | 504 UNITS        | 3195 LBS      |
| STANDARD STONE      | \$6.64/SF | 6 7/8" X 8 1/4" X 2 3/4" THICK  | 2.53 UNITS = 1SF  | 95.94 SF            | 240 UNITS        | 3064 LBS      |
| XL STONE            | \$6.64/SF | 8 1/4" X 13 3/4" X 2 3/4" THICK | 1.26 UNITS = 1SF  | 95.94 SF            | 120 UNITS        | 3072 LBS      |

AVAILABLE COLORS: LIMESTONE, SANDSTONE, COFFEE CREEK, MAHOGANY ASH, DARK CHARCOAL (HALF STONES ONLY)

## TURFSTONE

SOLD PER PIECE

| PRODUCT DESCRIPTION | PRICE                    | UNIT SIZE                        | COVERAGE PER UNIT | COVERAGE PER PALLET | UNITS PER PALLET | PALLET WEIGHT |
|---------------------|--------------------------|----------------------------------|-------------------|---------------------|------------------|---------------|
| STANDARD TURFSTONE  | \$4.30/SF<br>\$10.75 EA. | 15 3/4" X 23 5/8" X 3 1/8" THICK | 1 UNITS = 2.5SF   | 80SF                | 32 UNITS         | 1975 LBS      |

AVAILABLE COLORS: NATURAL

## BEACON HILL

SOLD PER LAYER OR PER PIECE

(SMALL RECTANGLE ONLY)

\*SEE BACK OF CATALOG FOR LAYING PATTERNS

| PRODUCT DESCRIPTION | PRICE                   | UNIT SIZE                   | COVERAGE PER UNIT | COVERAGE PER PALLET | UNITS PER PALLET | PALLET WEIGHT |
|---------------------|-------------------------|-----------------------------|-------------------|---------------------|------------------|---------------|
| RANDOM BUNDLE       | \$742/SF<br>\$86.52/LAY | RANDOM BUNDLE               | 11.66SF           | 104.91SF            | 9 LAYERS         | 2879 LBS      |
| SMALL RECTANGLES    | \$5.75EA.               | 15" X 7 1/2" X 2 3/8" THICK | 11.66SF           | 104.91SF            | 9 LAYERS         | 2879 LBS      |

AVAILABLE COLORS: FOSSIL FLAG & FOSSIL SMOOTH, SIERRA FLAG, CHARCOAL SMOOTH (SMALL RECT. ONLY)

## BRUSSELS DIMENSIONAL WALL

SOLD PER PIECE

| PRODUCT DESCRIPTION | PRICE     | UNIT SIZE           | COVERAGE PER UNIT | COVERAGE PER PALLET | UNITS PER PALLET | PALLET WEIGHT |
|---------------------|-----------|---------------------|-------------------|---------------------|------------------|---------------|
| STANDARD            | \$6.63EA. | 8" X 12" X 4" THICK | 1 UNITS = .33SF   | 32SF                | 96 UNITS         | 3261 LBS      |

AVAILABLE COLORS: LIMESTONE, SANDSTONE, COFFEE CREEK, MAHAGONY ASH



\*REFUNDABLE PALLET CHARGES APPLY



# OAKS



## PAVERS SOLD PER LAYER OR PER PIECE (SMALL RECTANGLE ONLY)

| PRODUCT DESCRIPTION   | PRICE                    | UNIT SIZE                       | COVERAGE PER LAYER   | COVERAGE PER PALLET | LAYERS PER PALLET | PALLET WEIGHT |
|-----------------------|--------------------------|---------------------------------|----------------------|---------------------|-------------------|---------------|
| MONTEREY RANDOM       | \$7.12/SF<br>\$91.84/LAY | ASSORTED SIZES<br>1.97" THICK   | 12.9 SF              | 103.4 SF            | 8 LAYERS          | 2958 LBS      |
| NUEVA RANDOM          | \$7.12/SF<br>\$91.84/LAY | ASSORTED SIZES<br>1.97" THICK   | 12.9 SF              | 103.4 SF            | 8 LAYERS          | 2940 LBS      |
| NUEVA SMALL RECTANGLE | \$7.12/SF<br>\$6.13/EA.  | 7.87" X 15.75" X<br>1.97" THICK | 12.9 SF<br>.85 SF/PC | 103.4 SF            | 8 LAYERS          | 2912 LBS      |

AVAILABLE COLORS:

MONTEREY - WICKER & TWEED

NUEVA RANDOM - MARBLE GREY

NUEVA SMALL RECT. - ONYX

\*OTHER COLORS AVAILABLE UPON SPECIAL ORDER



\*REFUNDABLE PALLET CHARGES APPLY



# FENDT

THE  
CONCRETE  
SERVICE,  
INC.



## HOLLAND SOLD PER PIECE

| PRODUCT DESCRIPTION | PRICE     | UNIT SIZE             | COVERAGE PER UNIT | COVERAGE PER PALLET | UNITS PER PALLET | PALLET WEIGHT |
|---------------------|-----------|-----------------------|-------------------|---------------------|------------------|---------------|
| STANDARD COLORS     | \$4.03/SF | 8" X 4" X 2.36" THICK | 4.5 UNITS = 1SF   | 108SF               | 486 UNITS        | 3024 LBS      |
| MOSSY OAK COLOR     | \$4.94/SF | 8" X 4" X 2.36" THICK | 4.5 UNITS = 1SF   | 108SF               | 486 UNITS        | 3024 LBS      |
| JET BLACK COLOR     | \$5.84/SF | 8" X 4" X 2.36" THICK | 4.5 UNITS = 1SF   | 108SF               | 486 UNITS        | 3024 LBS      |

## OLD WORLD HOLLAND SOLD PER PIECE

| PRODUCT DESCRIPTION | PRICE     | UNIT SIZE             | COVERAGE PER UNIT | COVERAGE PER PALLET | UNITS PER PALLET | PALLET WEIGHT |
|---------------------|-----------|-----------------------|-------------------|---------------------|------------------|---------------|
| STANDARD COLORS     | \$6.11/SF | 8" X 4" X 2.36" THICK | 4.5 UNITS = 1SF   | 108SF               | 486 UNITS        | 3024 LBS      |
| MOSSY OAK COLOR     | \$7.02/SF | 8" X 4" X 2.36" THICK | 4.5 UNITS = 1SF   | 108SF               | 486 UNITS        | 3024 LBS      |

STANDARD COLORS: ANTIQUE, LIMESTONE, SLATE, WALNUT \*OTHER COLORS AVAILABLE VIA SPECIAL ORDER



\*REFUNDABLE PALLET CHARGES APPLY



# TRIPLE H

THE  
CONCRETE  
SERVICE,  
INC.

## COVINGTON SOLD PER PIECE

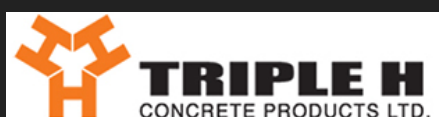
\*SEE BACK OF CATALOG FOR LAYING PATTERNS

| PRODUCT DESCRIPTION | PRICE                   | UNIT SIZE                        | COVERAGE PER UNIT | COVERAGE PER PALLET | UNITS PER PALLET | PALLET WEIGHT |
|---------------------|-------------------------|----------------------------------|-------------------|---------------------|------------------|---------------|
| MEGA                | \$3.60/SF<br>\$8.10 EA. | 17.71 X 17.71 X<br>2.36" THICK   | 1 UNITS = 2.2 SF  | 83.6 SF             | 38 UNITS         | 2309 LBS      |
| LARGE               | \$3.60/SF<br>\$5.22 EA. | 11.81' X 17.71" X<br>2.36" THICK | 1 UNITS = 145 SF  | 82.65 SF            | 57 UNITS         | 2223 LBS      |
| MEDIUM              | \$3.60/SF<br>\$3.75 EA. | 11.81" X 11.81" X<br>2.36" THICK | 1 UNITS = .96 SF  | 109.44 SF           | 114 UNITS        | 3078 LBS      |
| SMALL               | \$3.60/SF<br>\$1.72 EA. | 5.9" X 11.81" X<br>2.36" THICK   | 1 UNITS = .48 SF  | 72.96 SF            | 152 UNITS        | 2052 LBS      |

AVAILABLE COLORS: SLATE, BEIGE

## PAVERS SOLD PER PIECE

| PRODUCT DESCRIPTION        | PRICE       | UNIT SIZE                        | COVERAGE PER UNIT | COVERAGE PER PALLET | UNITS PER PALLET | PALLET WEIGHT |
|----------------------------|-------------|----------------------------------|-------------------|---------------------|------------------|---------------|
| BRICK PATTERN<br>SAHARA    | \$7.25 EA.  | 19.68" X 19.68" X<br>1.57" THICK | 1 UNITS = 2.68SF  | 160.8SF             | 60 UNITS         | 2826 LBS      |
| EURO PATTERN<br>RED RANGE  | \$7.25 EA.  | 19.68" X 19.68" X<br>1.57" THICK | 1 UNITS = 2.68SF  | 160.8SF             | 60 UNITS         | 2826 LBS      |
| DIAMOND CAST<br>18"        | \$7.35 EA.  | 18" X 18" X<br>1.57" THICK       | 1 UNITS = 2.18SF  | 130.8SF             | 60 UNITS         | 2250 LBS      |
| DIAMOND CAST<br>24"        | \$10.50 EA. | 23.62" X 23.62" X<br>1.57" THICK | 1 UNITS = 3.87SF  | 116.1SF             | 30 UNITS         | 2040 LBS      |
| MAPLE WOOD<br>LOG STEPPERS | \$1045 EA.  | 14" DIAMETER<br>1.5" THICK       |                   |                     | 54 UNITS         | 1026 LBS      |





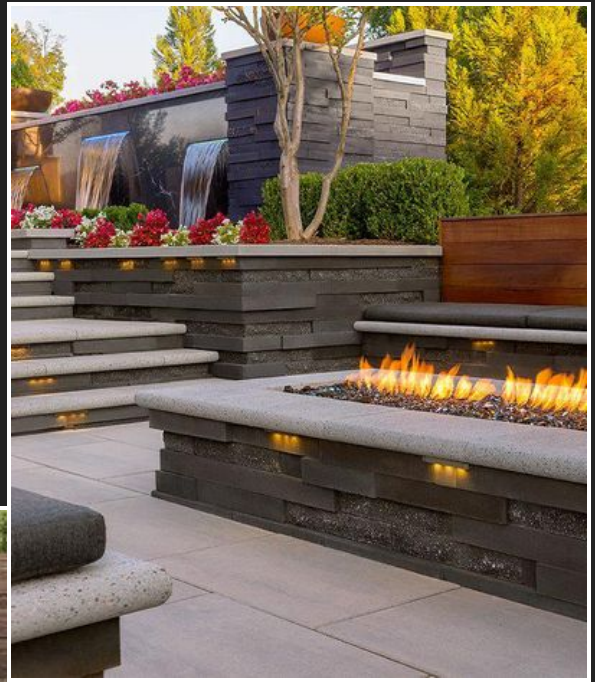
# TECHO-BLOC

BLUE STAR  
LANDSCAPE  
SUPPLY





# TECHO-BLOC





# GLEN-GERY

THE  
CONCRETE  
SERVICE,  
INC.



## CLAY PAVERS SOLD PER PIECE

| PRODUCT DESCRIPTION            | PRICE     | UNIT SIZE                   | COVERAGE PER UNIT | COVERAGE PER PALLET | UNITS PER PALLET | PALLET WEIGHT |
|--------------------------------|-----------|-----------------------------|-------------------|---------------------|------------------|---------------|
| COVINGTON, ALBANY, & JAMESTOWN | \$1.65EA. | 3.63" X 7.63" X 2.25" THICK | 5.2 UNITS = 1SF   | 101SF               | 525 UNITS        | 2468 LBS      |
| EDL BROWN & STEEL CITY         | \$1.40EA. | 4" X 8" X 2.25" THICK       | 4.5 UNITS = 1SF   | 104.5SF             | 470 UNITS        | 2961 LBS      |



\*REFUNDABLE PALLET CHARGES APPLY

# HIGH FORMAT

THE  
CONCRETE  
SERVICE,  
INC.

BLUE STAR  
LANDSCAPE  
SUPPLY



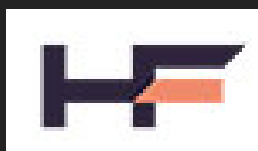
## PAVERS SOLD PER LAYER OR PER PIECE (SUPERIOR STEPPERS ONLY)

| PRODUCT DESCRIPTION   | PRICE                     | UNIT SIZE                      | COVERAGE PER LAYER | COVERAGE PER PALLET | LAYERS PER PALLET | PALLET WEIGHT |
|-----------------------|---------------------------|--------------------------------|--------------------|---------------------|-------------------|---------------|
| DIMENSIONAL FLAGSTONE | \$9.65/SF<br>\$118.21/LAY | ASSORTED SIZES<br>2" THICK     | 12.25 SF           | 98 SF               | 8 LAYERS          | 2350 LBS      |
| GRAND FLAGSTONE       | \$9.65/SF<br>\$108.56/LAY | ASSORTED SIZES<br>1 3/4" THICK | 11.25 SF           | 90 SF               | 8 LAYERS          | 2000 LBS      |
| SUPERIOR STEPPERS     | \$3548 EA.                | 21" X 21" X<br>2" THICK        |                    | 16 PCS              |                   | 1300 LBS      |

AVAILABLE COLORS: FOND DU LAC & SLATE GRAY. SPECIAL ORDER ONLY - LIMESTONE  
BLUESTONE AVAILABLE BY SPECIAL ORDER ON DIMENSIONAL FLAGSTONE ONLY

\*EXTENDED LEAD TIMES POSSIBLE - PLEASE CALL FOR AVAILABILITY ON ALL HIGH FORMAT PRODUCTS\*

\*REFUNDABLE PALLET CHARGES APPLY





# HIGH FORMAT DIMENSIONAL & IRREGULAR STEPS SOLD PER PIECE

| SIZE          | PRICE        | STEPS PER PALLET | PALLET WEIGHT |
|---------------|--------------|------------------|---------------|
| 3' X 18" X 7" | \$126.23 EA. | 8 STEPS          | 3050 LBS      |
| 4' X 18" X 7" | \$150.15 EA. | 8 STEPS          | 4050 LBS      |
| 4' X 24" X 7" | \$170.78 EA. | 4 STEPS          | 2750 LBS      |
| 6' X 30" X 7" | \$21945 EA.  | 3 STEPS          | 4000 LBS      |
| 6' IRREGULAR  | \$21945 EA.  | 3 STEPS          | 3900 LBS      |
| 7" IRREGULAR  | \$171.60 EA. | 8 STEPS          | 4200 LBS      |



AVAILABLE COLORS: FOND DU LAC, SLATE GRAY, LIMESTONE (SPECIAL ORDER ONLY)

\*EXTENDED LEAD TIMES POSSIBLE - PLEASE CALL FOR AVAILABILITY ON ALL HIGH FORMAT PROCUTS\*

\*REFUNDABLE PALLET CHARGES APPLY

## NATURAL STONE STEPS SOLD PER PIECE



| PRODUCT DESCRIPTION      | SIZE              | PRICE            |
|--------------------------|-------------------|------------------|
| FOND DU LAC CUT STEPS    | 18" X 36" X 5"-7" | \$224.00 EA.     |
| FOND DU LAC CUT STEPS    | 18" X 48" X 5"-7" | \$337.00 EA.     |
| CHILTON CUT STEPS        | 18" X 36" X 5"-7" | \$213.00 EA.     |
| CHILTON CUT STEPS        | 18" X 48" X 5"-7" | \$319.00 EA.     |
| CHILTON W/E SNAP STEPS   | 18" X 36" X 5"-7" | \$330.00 EA.     |
| CHILTON W/E SNAP STEPS   | 18" X 48" X 5"-7" | \$435.00 EA.     |
| F/C WEATHERED QURRY STEP | 16" X 48" X 6"    | +/- \$287.00 EA. |

# NATURAL PAVING USA

THE  
CONCRETE  
SERVICE,  
INC.



NATURAL PAVING IS SPECIAL ORDER ONLY WITH 2 WEEK AVERAGE LEAD TIMES - BELOW IS PRICING ON POPULAR PAVING PRODUCTS. CALL US FOR PRICING ON ADDITIONAL PRODUCTS FOR YOUR OUTDOOR PROJECT! VISIT THEIR WEBSITE ([naturalpavingusa.com](http://naturalpavingusa.com)) OR STOP IN THE SHOWROOM TO GRAB A CATALOG!

**CLASSICSTONE** SOLD FULL PALLETES OR PER PIECE (24" X 24" ONLY) \*SEE BACK OF CATALOG FOR LAYING PATTERNS

| PRODUCT DESCRIPTION | PRICE       | SIZE<br><small>*ALL 1" CALIBRATED THICKNESS*</small> | COVERAGE PER PALLET | PALLET WEIGHT |
|---------------------|-------------|--|---------------------|---------------|
| PROMENADE           | \$11.76/SF  | FRENCH PATTERN                                       | 205 SF              | 2250LBS       |
| GOLDEN FOSSIL       | \$11.04/SF  | FRENCH PATTERN                                       | 205 SF              | 2250LBS       |
| STEEL BLUE          | \$11.76/SF  | FRENCH PATTERN                                       | 205 SF              | 2250LBS       |
| PROMENADE           | \$46.08 EA. | 24" X 24"  | 176 SF              | 2000LBS       |
| GOLDEN FOSSIL       | \$46.06 EA. | 24" X 24"  | 176 SF              | 2000LBS       |
| STEEL BLUE          | \$46.06 EA. | 24" X 24"  | 176 SF              | 2000LBS       |

## MATCHING PRODUCTS AVAILABLE:

-ADDITIONAL COLORS: HARVEST, LAKELAND, CHARCOAL, GRAPHITE  
-ADDITIONAL PAVER STYLES  
-TREADS

-DRIVEWAY PAVERS  
-PIER COPING  
-FIREPIT KITS  
-VENEERS  
-COUNTERTOPS

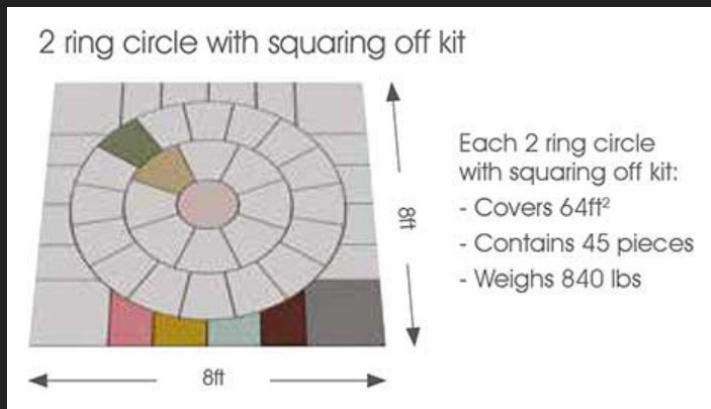
-STEP TREADS  
-SLABS  
-COPING  
-CIRCLE KITS





# NATURAL PAVING USA

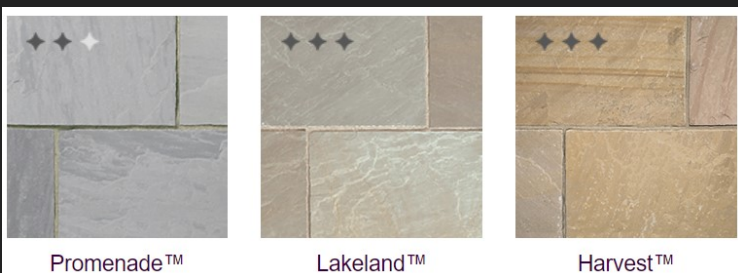
## CLASSICSTONE COLORS:



## DE TERRA COLRS:



## STEP TREAD COLRS:



# NATURAL STONE

THE  
CONCRETE  
SERVICE,  
INC.

BLUE STAR  
LANDSCAPE  
SUPPLY

## IRREGULAR FLAGSTONE SOLD PER TON

| PRODUCT DESCRIPTION                                 | PRICE /TON | APPROX. COVERAGE PER TON | APPROX. \$/SF |
|---|------------|--------------------------|---------------|
| CHILTON FLAGSTONE (1 3/4" - 2 1/4")                 | \$949.00   | 85 SF                    | \$11.16       |
| FOND DU LAC SILVER FLAGSTONE (1 1/2" - 2 1/2")      | \$995.00   | 85 SF                    | \$11.70       |
| IDAHO SILVER/GOLD FLAGSTONE "THICK" (1" X 1 1/2")   | \$540.00   | 90 SF                    | \$6.00        |
| IDAHO SILVER/GOLD FLAGSTONE "THIN" (1/2" - 3/4")    | \$680.00   | 245 SF                   | \$2.78        |
| IDAHO COWBOY COFFEE FLAGSTONE "THICK" (1" - 1 1/2") | \$605.00   | 115 SF                   | \$4.65        |
| IDAHO COWBOY COFFEE FLAGSTONE "THIN" (1/2" - 3/4")  | \$855.00   | 245 SF                   | \$3.24        |
| FULL COLOR FLAGSTONE "THICK" (1 1/4" - 2")          | \$510.00   | 85 SF                    | \$6.00        |
| FULL COLOR FLAGSTONE "THIN" (3/4" - 1 1/2")         | \$510.00   | 90 SF                    | \$5.67        |

## PATTERNED FLAGSTONE SOLD PER PALLET

| PRODUCT DESCRIPTION                | PRICE /SF | SIZE                       | COVERAGE PER PALLET |
|------------------------------------|-----------|----------------------------|---------------------|
| FULL COLOR NATURAL CLEFT (1 1/2")  | \$9.2     | RANDOM QTY. MIXED SIZES    | 140 - 160 SF        |
| SELECT BLUE NATURAL CLEFT (1 1/2") | \$12.15   | RANDOM QTY. MIXED SIZES    | 140 - 160 SF        |
| VALDERS RUSTIC BUFF (1 5/8")       | \$13.50   | 6"X6" - 18"X18" SEE PG. 26 | 100 SF              |
|                                    |           |                            |                     |
|                                    |           |                            |                     |

NOTE: NATURAL CLEFT SURFACES WILL VARY +/-1". AVAILABILITY ON PATTERNED FULL COLOR AND SELECT BLUE IS LIMITED - PLEASE CALL FOR CURRENT AVAILABILITY AND LEAD TIME.

## TUMBLED FLAGSTONE SOLD PER PIECE OR PER TON (IRREGULAR ONLY)

| PRODUCT DESCRIPTION           | PRICE        | SIZE                                       | PRICE/SF          |
|-------------------------------|--------------|--|-------------------|
| SELECT BLUE IRREGULAR TUMBLED | \$495.00/TON | IRREGULAR +/- 2" THICK<br>APPROX. 70SF/TON | APPROX.<br>\$7.07 |
| SELECT BLUE TUMBLED           | \$4.15 EA.   | 6" X 6" X 2" THICK                         | \$16.60           |
| SELECT BLUE TUMBLED           | \$8.10 EA.   | 6" X 12" X 2" THICK                        | \$16.20           |
| SELECT BLUE TUMBLED           | \$16.20 EA.  | 12" X 12" X 2" THICK                       | \$16.20           |

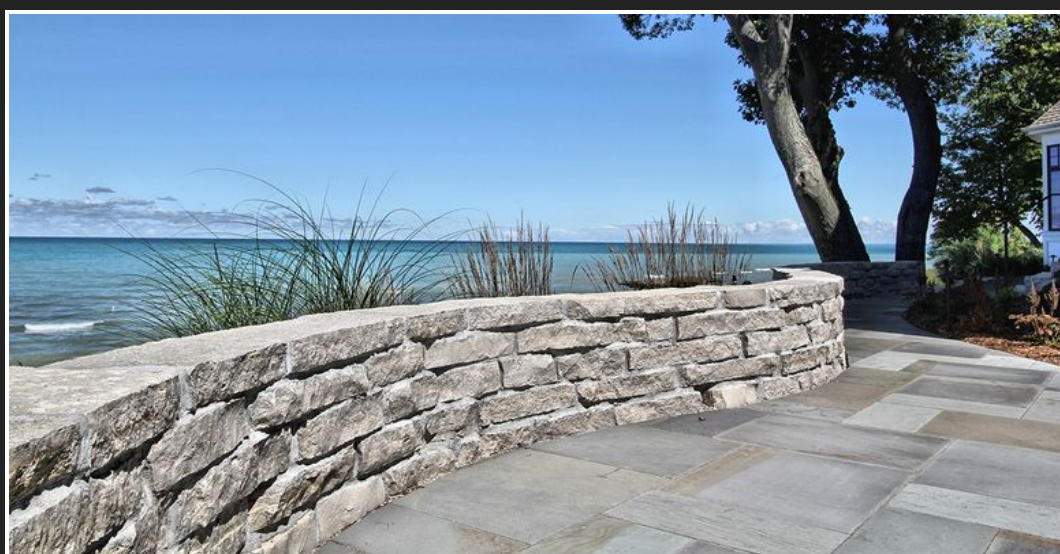


## STEPPERS & SHIMS SOLD PER TON

| PRODUCT DESCRIPTION            | PRICE /TON | APPROX. COVERAGE PER TON | APPROX. \$/SF |
|--------------------------------|------------|--------------------------|---------------|
| CHILTON STEPPERS (1" - 2")     | \$462.00   | 85 SF                    | \$544         |
| FOND DU LAC STEPPERS (1" - 2") | \$365.00   | 85 SF                    | \$4.29        |
| CHILTON SHIMS                  | \$267.00   | 35 FF                    | \$7.63/FF     |
| FOND DU LAC SHIMS              | \$267.00   | 35 FF                    | \$7.63/FF     |

## WALLSTONE & BORDER SOLD PER TON

| PRODUCT DESCRIPTION     | SIZE                          | PRICE /TON | APPROX. COVERAGE PER TON |
|-------------------------|-------------------------------|------------|--------------------------|
| CHILTON CUT DRYWALL     | 8" X 2" - 3" X RANDOM LENGTHS | \$402.90   | 15-20 FF                 |
| FOND DU LAC CUT DRYWALL | 8" X 2" - 3" X RANDOM LENGTHS | \$448.80   | 15-20 FF                 |
| CHILTON BORDER EDGE     | 4" X 4" X RANDOM LENGTHS      | \$588.20   | 110 LF                   |
| FOND DU LAC BORDER EDGE | 4" X 4" X RANDOM LENGTHS      | \$588.20   | 110 LF                   |



## COVINGTON LAYING PATTERNS



### PATTERN A

50% - LARGE  
34% - MEDIUM  
16% - SMALL



### PATTERN B

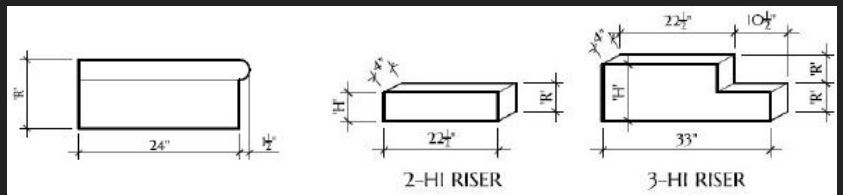
37% - LARGE  
50% - MEDIUM  
13% - SMALL



### PATTERN C

36% - MEGA  
24% - LARGE  
32% - MEDIUM  
8% - SMALL

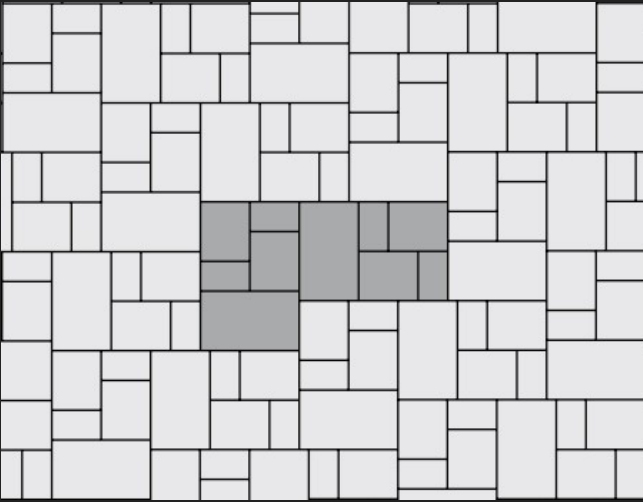
## PRECAST STEPS



|             |                                    |      |    |        |
|-------------|------------------------------------|------|----|--------|
| PSTEP36     | 36"X7"X12" PRECAST STEP            | EA.  | \$ | 67.95  |
| PSTEP48     | 48"X7"X12" PRECAST STEP            | EA.  | \$ | 90.65  |
| PSTEPRISE2  | 2 HIGH END SET -FOR STEPS          | PAIR | \$ | 18.75  |
| PSTEPRISE3  | 3 HIGH END SET -FOR STEPS          | PAIR | \$ | 29.50  |
| PSTOOP36    | 36"X7"X24" PRECAST STOOP           | EA.  | \$ | 171.50 |
| PSTOOP48    | 48"X7"X24" PRECAST STOOP           | EA.  | \$ | 228.65 |
| PSTOOPRISE2 | 2 HIGH END SET (RISER) -FOR STOOPS | PAIR | \$ | 28.15  |
| PSTOOPRISE3 | 3 HIGH END SET (RISER) -FOR STOOPS | PAIR | \$ | 44.50  |

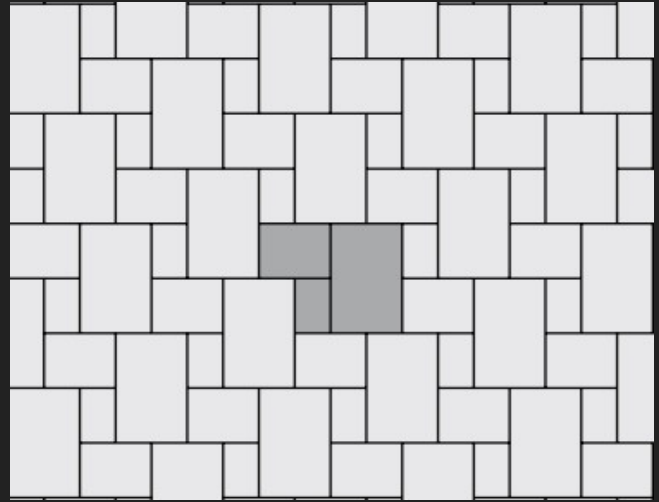


## BRUSSELS LAYING PATTERNS



PATTERN AF

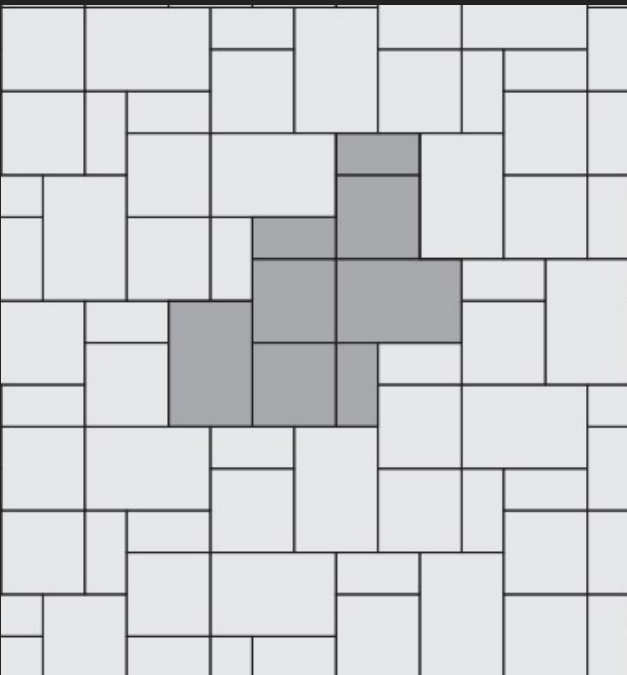
20% - HALF STONES  
40% - STANDARD  
40% - XL



PATTERN Y

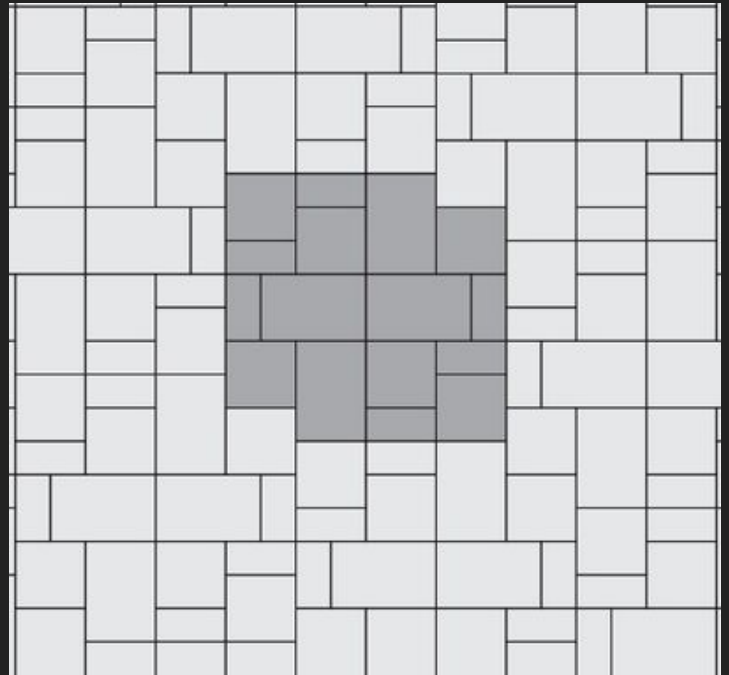
14% - HALF STONES  
29% - STANDARD  
57% - XL

## BEACON HILL PATTERNS



PATTERN A

GOES WITH RANDOM BUNDLE



PATTERN B

GOES WITH RANDOM BUNDLE

# DELIVERY

## HARDSCAPE (PALATIZED PRODUCTS OR BOXED GRAVELS)

|             |                  |
|-------------|------------------|
| 0-10 MILES  | \$110.00         |
| 11-20 MILES | \$130.00         |
| 21-30 MILES | \$150.00         |
| 31-40 MILES | \$180.00         |
| 41-50 MILES | \$210.00         |
| 51-60 MILES | \$240.00         |
| 61-70 MILES | \$290.00         |
| 71-80 MILES | \$340.00         |
| 81 + MILES  | CALL FOR PRICING |

## GRAVEL

|             |                  |
|-------------|------------------|
| 0-5 MILES   | \$100.00         |
| 6-10 MILES  | \$110.00         |
| 11-15 MILES | \$120.00         |
| 16-20 MILES | \$130.00         |
| 21-25 MILES | \$150.00         |
| 26-30 MILES | \$170.00         |
| 31-35 MILES | \$200.00         |
| 36-40 MILES | \$230.00         |
| 40+ MILES   | CALL FOR PRICING |

\*ADDITIONAL FUEL SURCHARGES MAY OCCUR DURING TIMES OF HIGH FUEL COST\*





# THE CONCRETE SERVICE, INC.

DESIGNER'S  
CHOICE<sup>STONE</sup>  
— 100+ UNIQUE DESIGNS —

## BEAUTY-BEYOND CONCRETE

Beautiful selection of natural stone for all areas –  
fireplace surrounds, feature walls, outdoor  
living space, and decorative accents.

**THE  
CONCRETE  
SERVICE,  
INC.**



FAMILY  
OWNED  
AND  
OPERATED

LANDSCAPE DESIGN SERVICES AVAILABLE | (231) 946-7880

We are northern Michigan's premier supplier of stone, masonry and hardscape materials.

\* ALL PRICES SUBJECT TO CHANGE WITHOUT NOTICE

### SHOWROOM

3743 West Front Street, Traverse City Michigan

231.946.7880

[www.THECONCRETESERVICE.com](http://www.THECONCRETESERVICE.com)



facebook.



Instagram