

THE CONCRETE SERVICE, INC.

2022 LANDSCAPE PRICELIST

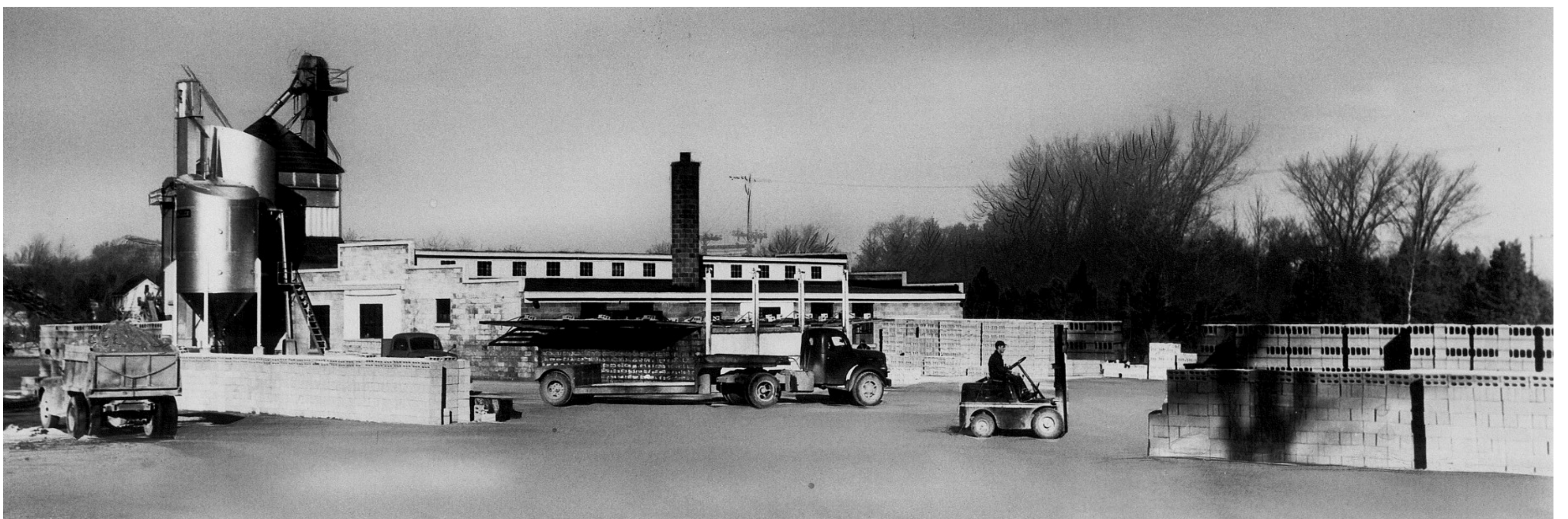
*PRICING SUBJECT TO CHANGE



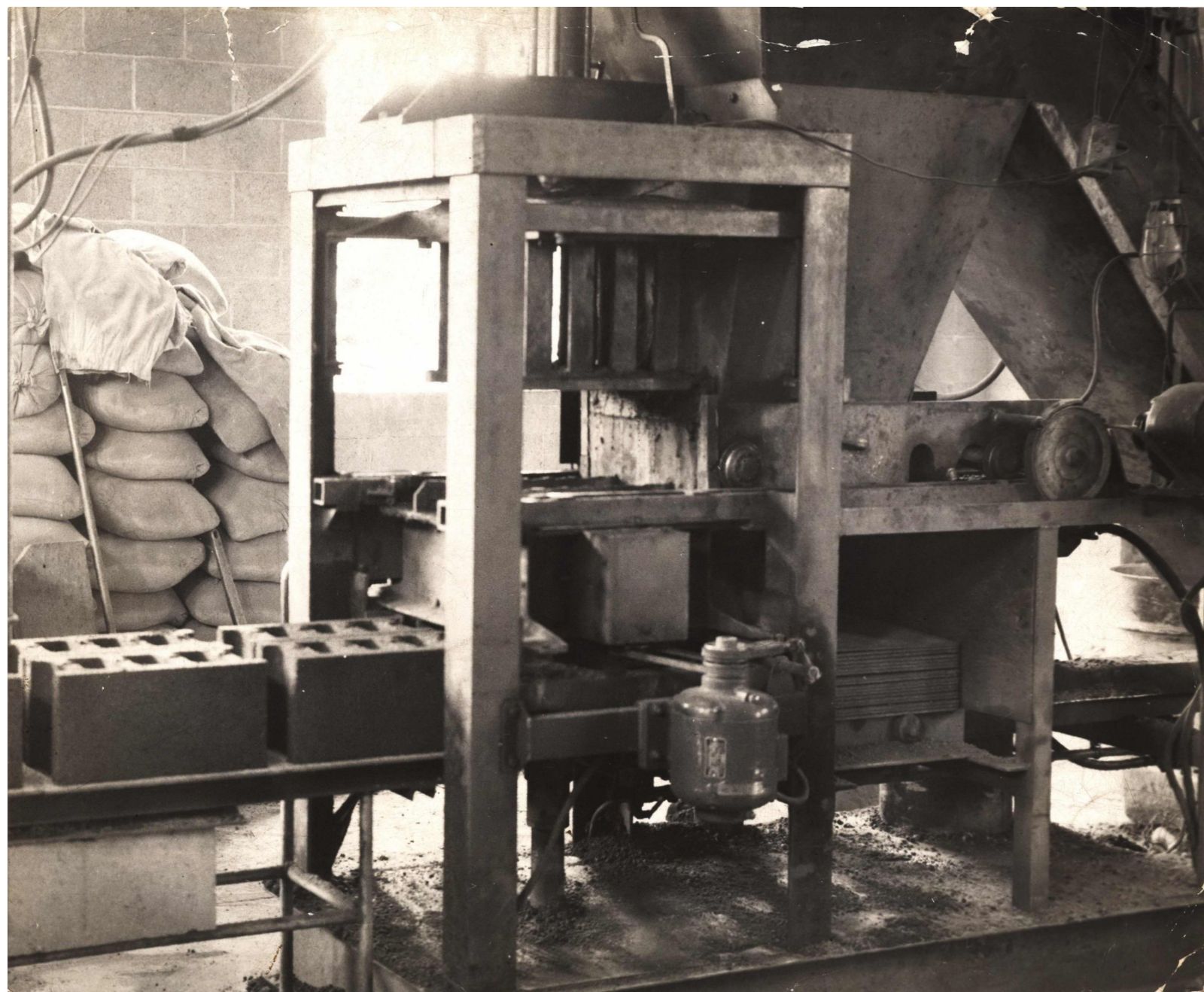
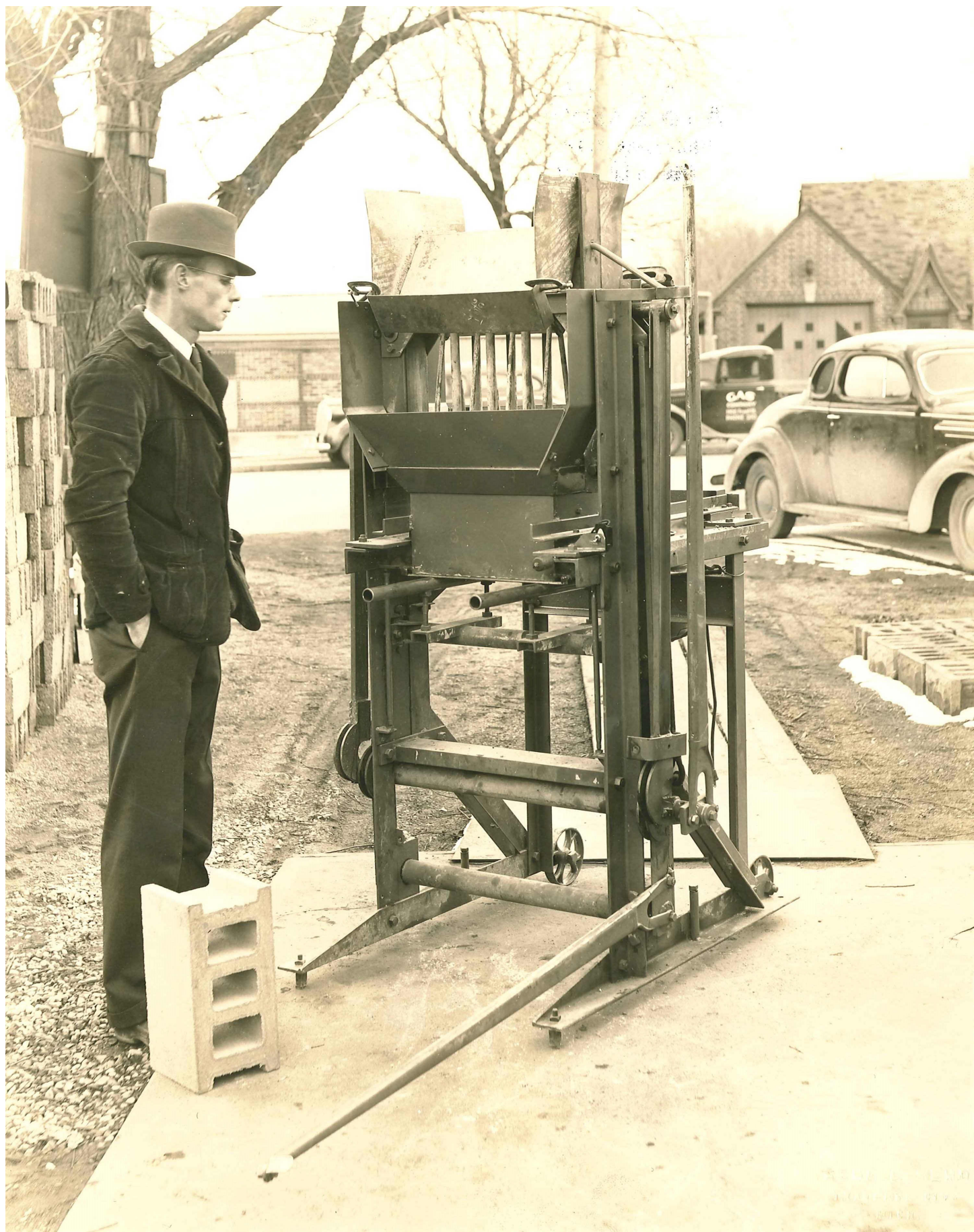
◆ VINTAGE ◆
1932
THE CONCRETE SERVICE
★★★★ ★★★★★★
CHEERS TO 90 YEARS!

CONTENTS

PAGES 4-5	VERSA-LOK
PAGES 6-7	PYZIQUE
PAGES 8	OLD TOWN WALL
PAGES 9	FIREPLACES
PAGES 10-11	FIREPITS
PAGES 12-13	UNILOCK
PAGES 14-15	HIGH FORMAT
PAGES 15	STEPS
PAGES 16	<i>NEW!</i> NATURAL PAVING
PAGES 17	VALDERS/EDEN
PAGES 18	OAKS
PAGES 19	FENDT
PAGES 20	TRIPLE H
PAGES 21	GLEN GERY
PAGES 22-23	NATURAL STONE
PAGES 24	LANDSCAPE ACCESORIES
PAGES 25	MISC. SUPPLIERS
PAGES 26-27	GRAVEL & DELIVERY
PAGES 28-31	LAYING PATTERNS
BACK COVER	ABOUT US

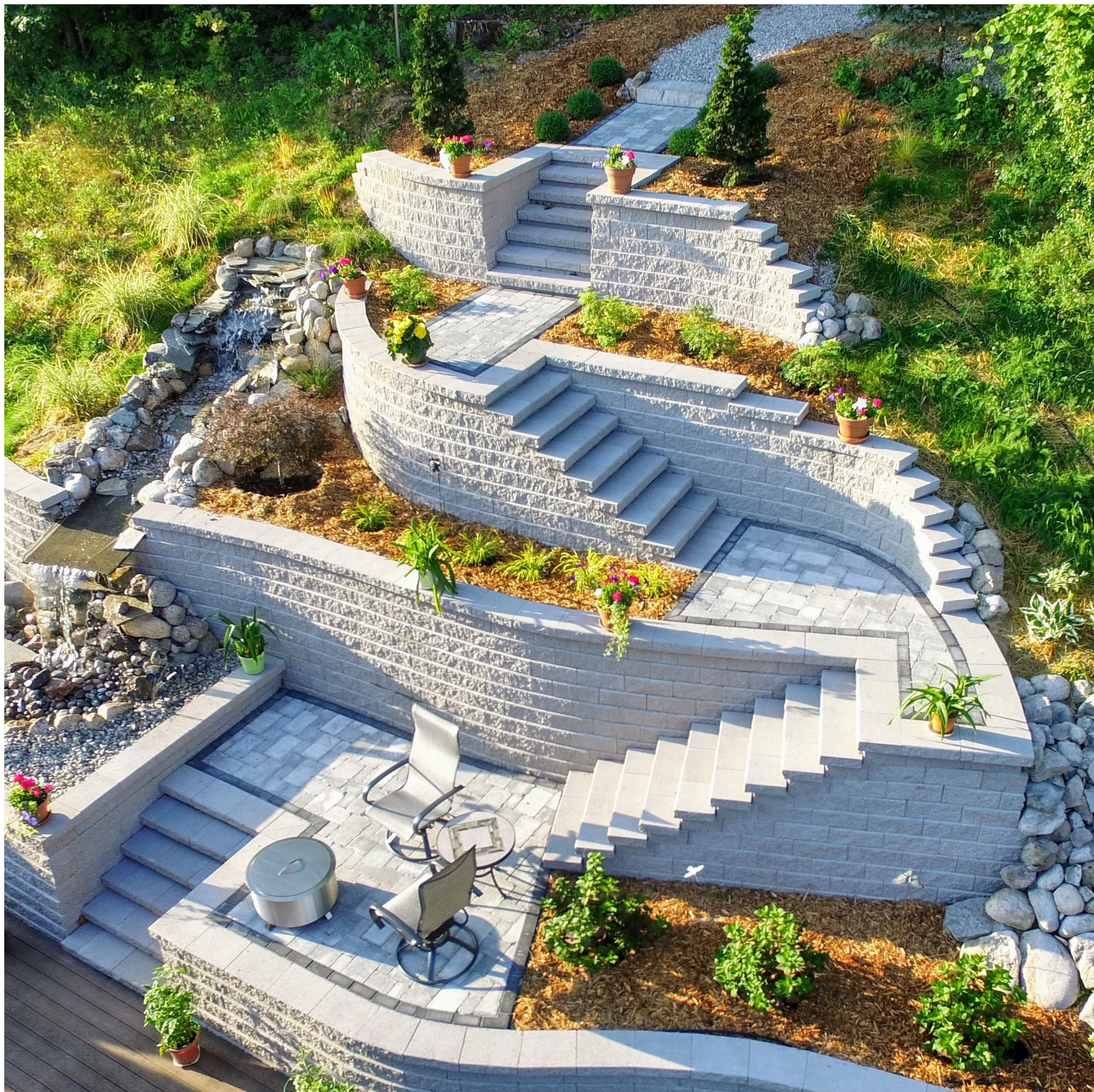


THE CONCRETE SERVICE, INC. IS PROUD TO BE
CELEBRATING *90 years* IN BUSINESS
THIS YEAR!!



90 YEARS WOULD NOT HAVE BEEN POSSIBLE WITHOUT
THE SUPPORT OF OUR AMAZING CONTRACTORS AND
CUSTOMERS, SO THANK YOU TO EVERYONE WHO HAS
VISITED US OVER THE YEARS.

VERSA-LOK



WALL UNIT SPECIFICATIONS:

16" (FACE) X 14" (BACK) X 6" (HEIGHT) X 12" (DEPTH)
.67 FACE FEET PER BLOCK
82 LBS PER BLOCK
48 UNITS PER PALLET
PALLET WEIGHT: 3,936LBS

CAP UNIT SPECIFICATIONS:

16" (FACE) X 16" (BACK) X 3 5/8" (HEIGHT) X 12" (DEPTH)
40 FACE FEET PER BLOCK
50 LBS PER BLOCK
96 UNITS PER PALLET
PALLET WEIGHT: 4,800LBS

STANDARD UNIT PRICING:

**SOLD PER PIECE

NATURAL BLOCK - \$644
COLORED BLOCK - \$6.94

NATURAL CAP - \$5.00
COLORED CAP - \$5.35



AVAILABLE
COLORS:

- EARTH BLEND
- CHARCOAL BLEND
- BUCKSKIN BLEND
- ANTIQUE BLEND

TUMBLED UNIT PRICING:

**SOLD PER PIECE

NATURAL BLOCK - \$9.04
COLORED BLOCK - \$9.81

NATURAL CAP - \$9.04
TUMBLED CAP - \$9.81



NATURAL

*ALL COLORS
AVAILABLE IN BOTH
STANDARD &
TUMBLED
UNITS*

ACCESSORIES:

- | | |
|-------------------------------------|--------------------------|
| VERSA-LOK PINS (2 PER BLOCK) | - \$0.25 EACH |
| VERSA-GRID 3.0 | - \$2.58 PER LINEAR FOOT |
| VERSA-GRID 5.0 | - \$2.87 PER LINEAR FOOT |
| VERSA-LIFTERS (DEPOSIT OR PURCHASE) | - \$74.95 EACH |
| VERSA-SPLITTER RENTAL | - \$35.00 PER DAY |
| SRW ADHESIVE 10.50Z(FOR CAPS) | - \$5.95 EACH |
| SRW ADHESIVE 280Z | - \$10.95 EACH |

PYZIQUE



PYZIQUE FIREPIT KITS:

50" OUTSIDE DIAMETER

32" INSIDE DIAMETER

HEIGHTS IN MULTIPLES OF 4"

14 BLOCKS PER LAYER

Firepits can be customized with mixed and matched colors and textures. Shown is a Standard Natural firepit with a Tumbled Charcoal Blend accent band/layer. Common height for a firepit is 16" (4 layers), but Pyzique's easy no-cut installation allows you to add or subtract layers as needed to fit your specific needs.

WALL UNIT SPECIFICATIONS:

11" (FACE) X 7" (BACK) X 4" (HEIGHT) X 9" (DEPTH)
.31 FACE FEET PER BLOCK
25 LBS PER BLOCK
150 UNITS PER PALLET
PALLET WEIGHT: 3,750 LBS

STANDARD UNIT PRICING:

**SOLD PER PIECE

NATURAL BLOCK - \$1.78
COLORED BLOCK - \$2.12



AVAILABLE
COLORS:

- EARTH BLEND
- CHARCOAL BLEND
- BUCKSKIN BLEND
- ANTIQUE BLEND
- NATURAL

TUMBLED UNIT PRICING:

**SOLD PER PIECE

NATURAL BLOCK - \$3.65
COLORED BLOCK - \$3.94



*ALL COLORS
AVAILABLE IN BOTH
STANDARD &
TUMBLED
UNITS*

FOR CAP OPTION VIEW VERSA-LOK CAPS

ACCESSORIES:

- | | |
|---------------------------|------------|
| PYZIQUE ROUNG RING INSERT | - \$209.00 |
| PYZIQUE ROUND GRATE | - \$124.00 |
| PYZIQUE GRILL GOVER FLAT | - \$209.00 |
| PYZIQUE FIRESCREEN | - \$446.00 |

FIREPIT AS PICTURED ON LEFT:

- | | |
|------------------------------------|------------|
| 42 - STANDARD NATURAL BLOCKS | |
| 14 - TUMBLED COLORED BLOCKS | |
| PYZIQUE ROUND RING W/ SINGLE GRATE | |
| | - \$462.92 |

OLD TOWN WALL



WALL UNIT SPECIFICATIONS:

12" (LONG) X 4" (HEIGHT) X 8" (DEPTH)
.33 FACE FEET PER BLOCK
28 LBS PER BLOCK
96 UNITS PER PALLET
PALLET WEIGHT: 2,758 LBS

UNIT PRICING:

**SOLD PER PIECE
- \$3.94 EACH

AVAILABLE COLORS:



BUCKSKIN BLEND



DARK WALNUT



CHARCOAL BLEND

FIREPLACES

Ask us about our **FIREPLACE** options!

Special order only - call or visit us for pricing & availability.



ISOKERN
Fireplaces & Chimneys

RUMFORD
FIREPLACES

UNILOCK®

FIREPITS



PYZIQUE FIREPIT KIT:

50" OUTSIDE DIAMETER
30" INSIDE DIAMETER
HEIGHTS IN MULTIPLES OF 4"
14 BLOCKS PER LAYER

FIREPIT AS PICTURED ON LEFT:

42 - STANDARD NATURAL BLOCKS
14 - TUMBLED COLORED BLOCKS
PYZIQUE ROUND RING W/ SINGLE GRATE
TOTAL - \$368.82

SEE PAGE 6 & 7 FOR ADDITIONAL PYZIQUE INFORMATION & PRICING



OLD TOWN FIREPIT KIT:

39" X 39" OUTSIDE
23" X 23" INSIDE
HEIGHTS IN MULTIPLES OF 4"
11 BLOCKS PER LAYER

FIREPIT AS PICTURED ON LEFT:

44 - OLD TOWN BLOCKS - \$173.36
SQUARE INSERT - \$210.00
TOTAL - \$383.36
SINGLE GRATE FOR SQUARE - \$129.00

SEE PAGE 8 FOR ADDITIONAL OLD TOWN INFORMATION & PRICING

*CUTTING REQUIRED FOR OLD TOWN FIREPIT KIT



UNLOCK SUNSET FIREPIT KIT:

52" OUTSIDE DIAMETER
36" INSIDE DIAMETER
12" HEIGHT
PALLET WEIGHT: 1,125LBS

AS PICTURED: \$731.00

AVAILABLE COLORS: LIMESTONE
(PICTURED), COFFEE CREEK,
MAHOGANY ASH, SANDSTONE

*REFUNDABLE PALLET CHARGES APPLY



BELVEDERE FIREPIT KIT:
 58" OUTSIDE DIAMETER
 37" INSIDE DIAMETER
 14 1/2" HEIGHT
 PALLET WEIGHT: 1,320LBS

\$727.38 (WOOD BURNING)
 \$1437.57 (GAS)

*REFUNDABLE PALLET
 CHARGES APPLY

*WHILE SUPPLIES LAST -
 CALL FOR AVAILABILITY



AVAILABLE COLORS:
 (HIGH FORMAT ONLY)
 LEFT TO RIGHT

FOND DU LAC, SLATE GRAY &
 LIMESTONE



NATURAL PAVING PROMENADE
 60 1/2" OUTSIDE DIAMETER
 36 1/2" INSIDE DIAMETER
 17" HEIGHT
 PALLET WEIGHT: 2425LBS

\$1,776.00 (WOOD BURNING)

*ALSO AVAILABLE IN
 LAKE LAND COLOR



MARMIRO GRANO TRAVERTINE
 52" OUTSIDE DIAMETER
 36" INSIDE DIAMETER
 12" HEIGHT
 PALLET WEIGHT: 1,160LBS

\$1495.00 (WOOD BURNING)

*ALSO AVAILABLE IN 18"
 HEIGHTS, DEEP BLUE &
 CREMA EDA COLORS

UNILOCK



BRUSSELS BLOCK

SOLD PER PIECE

*SEE BACK OF CATALOG FOR LAYING PATTERNS

PRODUCT DESCRIPTION	PRICE	UNIT SIZE	COVERAGE PER UNIT	COVERAGE PER PALLET	UNITS PER PALLET	PALLET WEIGHT
HALF STONE	\$6.10/SF	4" X 6 7/8" X 2 3/4" THICK	5.06 UNITS = 1SF	99.79SF	504 UNITS	3195 LBS
STANDARD STONE	\$6.10/SF	6 7/8" X 8 1/4" X 2 3/4" THICK	2.53 UNITS = 1SF	95.94 SF	240 UNITS	3064 LBS
XL STONE	\$6.10/SF	8 1/4" X 13 3/4" X 2 3/4"THICK	1.26 UNITS = 1SF	95.94 SF	120 UNITS	3072 LBS

AVAILABLE COLORS: LIMESTONE, SANDSTONE, COFFEE CREEK, MAHOGANY ASH, DARK CHARCOAL (HALF STONES ONLY)

TURFSTONE

SOLD PER PIECE

PRODUCT DESCRIPTION	PRICE	UNIT SIZE	COVERAGE PER UNIT	COVERAGE PER PALLET	UNITS PER PALLET	PALLET WEIGHT
STANDARD TURFSTONE	\$3.98/SF \$9.96 EA.	15 3/4" X 23 5/8" X 3 1/8" THICK	1 UNITS = 2.5SF	80SF	32 UNITS	1975 LBS

AVAILABLE COLORS: NATURAL

BEACON HILL

SOLD PER LAYER OR PER PIECE (SMALL RECTANGLE ONLY)

*SEE BACK OF CATALOG FOR LAYING PATTERNS

PRODUCT DESCRIPTION	PRICE	UNIT SIZE	COVERAGE PER UNIT	COVERAGE PER PALLET	UNITS PER PALLET	PALLET WEIGHT
RANDOM BUNDLE	\$6.85/SF \$79.88/LAY	RANDOM BUNDLE	11.66SF	104.91SF	9 LAYERS	2879 LBS
SMALL RECTANGLES	\$5.31EA.	15" X 7 1/2" X 2 3/8" THICK	11.66SF	104.91SF	9 LAYERS	2879 LBS

AVAILABLE COLORS: FOSSIL FLAG & FOSSIL SMOOTH, SIERRA FLAG, CHARCOAL SMOOTH (SMALL RECT. ONLY)

BRUSSELS DIMENSIONAL WALL

SOLD PER PIECE

PRODUCT DESCRIPTION	PRICE	UNIT SIZE	COVERAGE PER UNIT	COVERAGE PER PALLET	UNITS PER PALLET	PALLET WEIGHT
STANDARD	\$6.09EA.	8" X 12" X 4" THICK	1 UNITS = .33SF	32SF	96 UNITS	3261 LBS

AVAILABLE COLORS: LIMESTONE, SANDSTONE, COFFEE CREEK, MAHAGONY ASH



HIGH FORMAT

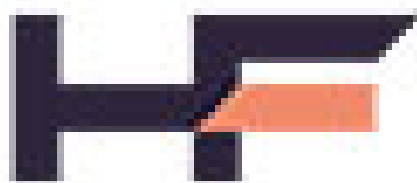


PAVERS SOLD PER LAYER OR PER PIECE (SUPERIOR STEPPERS ONLY)

PRODUCT DESCRIPTION	PRICE	UNIT SIZE	COVERAGE PER LAYER	COVERAGE PER PALLET	LAYERS PER PALLET	PALLET WEIGHT
DIMENSIONAL FLAGSTONE	\$8.30/SF \$101.68/LAY	ASSORTED SIZES 2" THICK	12.25 SF	98 SF	8 LAYERS	2350 LBS
GRAND FLAGSTONE	\$8.30/SF \$93.38/LAY	ASSORTED SIZES 1 3/4" THICK	11.25 SF	90 SF	8 LAYERS	2000 LBS
SUPERIOR STEPPERS	\$29.50 EA.	21" X 21" X 2" THICK		16 PCS		1300 LBS

AVAILABLE COLORS: FOND DU LAC & SLATE GRAY. SPECIAL ORDER ONLY - LIMESTONE
BLUESTONE AVAILABLE BY SPECIAL ORDER ON DIMENSIONAL FLAGSTONE ONLY

EXTENDED LEAD TIMES POSSIBLE - PLEASE CALL FOR AVAILABILITY ON ALL HIGH FORMAT PROCUTS



HIGH FORMAT DIMENSIONAL & IRREGULAR STEPS SOLD PER PIECE

SIZE	PRICE	STEPS PER PALLET	PALLET WEIGHT
3' X 18" X 7"	\$106.53 EA.	8 STEPS	3050 LBS
4' X 18" X 7"	\$120.27 EA.	8 STEPS	4050 LBS
4' X 24" X 7"	\$128.29 EA.	4 STEPS	2750 LBS
6' X 30" X 7"	\$180.99 EA.	3 STEPS	4000 LBS
6' IRREGULAR	\$180.99 EA.	3 STEPS	3900 LBS
7" IRREGULAR	\$12944 EA.	8 STEPS	4200 LBS



AVAILABLE COLORS: FOND DU LAC, SLATE GRAY, LIMESTONE (SPECIAL ORDER ONLY)

EXTENDED LEAD TIMES POSSIBLE - PLEASE CALL FOR AVAILABILITY ON ALL HIGH FORMAT PROCUTS

*REFUNDABLE PALLET CHARGES APPLY

NATURAL STONE STEPS SOLD PER PIECE



PRODUCT DESCRIPTION	SIZE	PRICE
FOND DU LAC CUT STEPS	18" X 36" X 5"-7"	\$200.00 EA.
FOND DU LAC CUT STEPS	18" X 48" X 5"-7"	\$300.00 EA.
CHILTON CUT STEPS	18" X 36" X 5"-7"	\$200.00 EA.
CHILTON CUT STEPS	18" X 48" X 5"-7"	\$300.00 EA.
CHILTON W/E SNAP STEPS	18" X 36" X 5"-7"	\$285.00 EA.
CHILTON W/E SNAP STEPS	18" X 48" X 5"-7"	\$380.00 EA.
F/C WEATHERED QURRY STEP	16" X 48" X 6"	+/- \$287.00 EA.

36" x 7" x 12" PRECAST STEP	\$56.70 EA.	2 HIGH - END SET FOR STEPS	\$14.95 EA.
48" X 7" X 12" PRECAST STEP	\$74.55 EA.	3 HIGH - END SET FOR STEPS	\$23.30 EA.
36" X 7" X 24" PRECAST STOOP	\$148.75 EA.		
48" X 7" X 24" PRECAST STOOP	\$193.75 EA.		

NEW! NATURAL PAVING



NATURAL PAVING IS SPECIAL ORDER ONLY WITH 2 WEEK AVERAGE LEAD TIMES - BELOW IS PRICING ON POPULAR PAVING PRODUCTS. CALL US FOR PRICING ON ADDITIONAL PRODUCTS FOR YOUR OUTDOOR PROJECT! VISIT THEIR WEBSITE (naturalpavingusa.com) OR STOP IN THE SHOWROOM TO GRAB A CATALOG!

CLASSICSTONE SOLD FULL PALLETS OR PER PIECE (24" X 24" ONLY) *SEE BACK OF CATALOG FOR LAYING PATTERNS

PRODUCT DESCRIPTION	PRICE	SIZE <small>*ALL 1" CALIBRATED THICKNESS*</small>	COVERAGE PER PALLET	PALLET WEIGHT
PROMENADE	\$11.76/SF	FRENCH PATTERN	205 SF	2250LBS
GOLDEN FOSSIL	\$11.04/SF	FRENCH PATTERN	205 SF	2250LBS
STEEL BLUE	\$11.76/SF	FRENCH PATTERN	205 SF	2250LBS
PROMENADE	\$46.08 EA.	24" X 24"	176 SF	2000LBS
GOLDEN FOSSIL	\$46.06 EA.	24" X 24"	176 SF	2000LBS
STEEL BLUE	\$46.06 EA.	24" X 24"	176 SF	2000LBS

MATCHING PRODUCTS AVAILABLE:
-ADDITIONAL COLORS: HARVEST, LAKELAND, CHARCOAL, GRAPHITE
-ADDITIONAL PAVER STYLES
-TREADS

-DRIVEWAY PAVERS
-PIER COPING
-FIREPIT KITS
-VENEERS
-COUNTERTOPS

-STEP TREADS
-SLABS
-COPING
-CIRCLE KITS



EDEN/VALDERS



EDEN/VALDERS IS SPECIAL ORDER ONLY WITH 2 WEEK AVERAGE LEAD TIMES - BELOW IS PRICING ON POPULAR PRODUCTS. CALL US FOR PRICING ON ADDITIONAL PRODUCTS FOR YOUR OUTDOOR PROJECT! VISIT THEIR WEBSITE (evstone.net) OR STOP IN THE SHOWROOM TO GRAB A CATALOG!

8" CUT DRYWALL SOLD PER TON - AVERAGE 20 FACE FEET PER TON COVERAGE

PRODUCT DESCRIPTION	2" - 3" HEIGHTS \$/TON	3" - 4" HEIGHTS \$/TON	4" - 5" HEIGHTS \$/TON	5" - 6" HEIGHTS \$/TON
EDEN	\$425.00	\$459.00	\$493.00	\$425.00
CHILTON	\$433.50	\$450.50	\$450.50	\$433.50
MOUNTAIN CREST	\$425.00	\$450.50	\$450.50	\$425.00
OAKFIELD	\$374.00	\$425.00	\$391.00	\$382.50
EMPIRE	\$476.00	\$450.50	\$450.50	\$408.00

****ALSO AVAILABLE****

SUPERIOR 8" DRYWALL: SAWN TOP AND BOTTOM, 3" OR 6" HEIGHT W/ +/- 0.25" TOLERANCE \$654. 45/TON
VALDERS 8" DRYWALL: SAWN TOP AND BOTTOM, 3 5/8" OR 5" HEIGHT W/ +/- 0.25" TOLERANCE CALL FOR PRICE

MATCHING PRODUCTS AVAILABLE:

- FLAGSTONE
 - STEPS
 - LAWN EDGING
 - TUMBLED PAVERS
 - PILLAR KITS
 - PAVERS
 - COPING
 - TREADS
- BENCHES
 - WEATHERED EDGE CUT DRYWALL
 - RANDOM DRYWALL
 - *ALL DRYWALL AVAILABLE IN 6", 8", 10" OR 12" DEPTH
 - STEPPERS
 - CAPS
- GRANITE BOULDERS & COBBLES
 - CHARACTER BOULDERS
 - OUTCROPPING WALL STONE
 - OURCROPPING FOR BENCHES
 - OUTCROPPING STEP QUALITY
 - LILLY PAD STEPS
 - OAKFIELD, VALDERS, & GUNMETAL BOULDERS



OAKS



PAVERS SOLD PER LAYER OR PER PIECE (SMALL RECTANGLE ONLY)

PRODUCT DESCRIPTION	PRICE	UNIT SIZE	COVERAGE PER LAYER	COVERAGE PER PALLET	LAYERS PER PALLET	PALLET WEIGHT
MONTEREY RANDOM	\$6.28/SF \$81.02/LAY	ASSORTED SIZES 1.97" THICK	12.9 SF	129 SF	10 LAYERS	3081 LBS
NUEVA RANDOM	\$6.00/SF \$77.40/LAY	ASSORTED SIZES 1.97" THICK	12.9 SF	129 SF	10 LAYERS	3063 LBS
NUEVA SMALL RECTANGLE	\$6.00/SF \$5.10/EA.	7.87" X 15.75" X 1.97" THICK	12.9 SF .85 SF/PC	129 SF	10 LAYERS	3034 LBS

AVAILABLE COLORS:

- MONTEREY - WICKER & TWEED
- NUEVA RANDOM - MARBLE GREY
- NUEVA SMALL RECT. - ONYX

*OTHER COLORS AVAILABLE UPON SPECIAL ORDER



*REFUNDABLE PALLET CHARGES APPLY

FENDT



HOLLAND SOLD PER PIECE

PRODUCT DESCRIPTION	PRICE	UNIT SIZE	COVERAGE PER UNIT	COVERAGE PER PALLET	UNITS PER PALLET	PALLET WEIGHT
STANDARD COLORS	\$3.62/SF	8" X 4" X 2.36" THICK	4.5 UNITS = 1SF	108SF	486 UNITS	3024 LBS
MOSSY OAK COLOR	\$3.62/SF	8" X 4" X 2.36" THICK	4.5 UNITS = 1SF	108SF	486 UNITS	3024 LBS
JET BLACK COLOR	\$5.22/SF	8" X 4" X 2.36" THICK	4.5 UNITS = 1SF	108SF	486 UNITS	3024 LBS

OLD WORLD HOLLAND SOLD PER PIECE

PRODUCT DESCRIPTION	PRICE	UNIT SIZE	COVERAGE PER UNIT	COVERAGE PER PALLET	UNITS PER PALLET	PALLET WEIGHT
STANDARD COLORS	\$5.46/SF	8" X 4" X 2.36" THICK	4.5 UNITS = 1SF	108SF	486 UNITS	3024 LBS
MOSSY OAK COLOR	\$5.94/SF	8" X 4" X 2.36" THICK	4.5 UNITS = 1SF	108SF	486 UNITS	3024 LBS

STANDARD COLORS: ANTIQUE, LIMESTONE, SLATE, WALNUT

*OTHER COLORS AVAILABLE UPON SPECIAL ORDER



*REFUNDABLE PALLET CHARGES APPLY

TRIPLE H

COVINGTON SOLD PER PIECE

*SEE BACK OF CATALOG FOR LAYING PATTERNS

PRODUCT DESCRIPTION	PRICE	UNIT SIZE	COVERAGE PER UNIT	COVERAGE PER PALLET	UNITS PER PALLET	PALLET WEIGHT
MEGA	\$3.35/SF \$7.37 EA.	17.71 X 17.71 X 2.36" THICK	1 UNITS = 2.2SF	162SF	38 UNITS	2309 LBS
LARGE	\$3.35/SF \$4.86 EA.	11.81' X 17.71" X 2.36" THICK	1 UNITS = 1. 45SF	162SF	57 UNITS	2223 LBS
MEDIUM	\$3.35/SF \$3.22 EA.	11.81" X 11.81" X 2.36" THICK	1 UNITS = .96SF	130.8SF	114 UNITS	3078 LBS
SMALL	\$3.35/SF \$1.61 EA.	5.9" X 11.81" X 2.36" THICK	1 UNITS = . 48SF	116.1SF	152 UNITS	2052 LBS

AVAILABLE COLORS: SLATE, BEIGE

PAVERS SOLD PER PIECE

PRODUCT DESCRIPTION	PRICE	UNIT SIZE	COVERAGE PER UNIT	COVERAGE PER PALLET	UNITS PER PALLET	PALLET WEIGHT
BRICK PATTERN SAHARA	\$6.65 EA.	19.68" X 19.68" X 1.57" THICK	1 UNITS = 2.68SF	160.8SF	60 UNITS	2826 LBS
EURO PATTERN RED RANGE	\$6.65 EA.	19.68" X 19.68" X 1.57" THICK	1 UNITS = 2.68SF	160.8SF	60 UNITS	2826 LBS
DIAMOND CAST 18"	\$6.73 EA.	18" X 18" X 1.57" THICK	1 UNITS = 2.18SF	130.8SF	60 UNITS	2250 LBS
DIAMOND CAST 24"	\$9.93 EA.	23.62" X 23.62" X 1.57" THICK	1 UNITS = 3.87SF	116.1SF	30 UNITS	2040 LBS
MAPLE WOOD LOG STEPPERS	\$9. 49 EA.	14" DIAMETER 1.5" THICK			54 UNITS	1026 LBS

GLEN-GERY



CLAY PAVERS SOLD PER PIECE

PRODUCT DESCRIPTION	PRICE	UNIT SIZE	COVERAGE PER UNIT	COVERAGE PER PALLET	UNITS PER PALLET	PALLET WEIGHT
COVINGTON, ALBANY, & JAMESTOWN	\$1.10EA.	3.63" X 7.63" X 2.25" THICK	5.2 UNITS = 1SF	101SF	525 UNITS	2468 LBS
EDL BROWN & STEEL CITY	\$1.30EA.	4" X 8" X 2.25" THICK	4.5 UNITS = 1SF	104.5SF	470 UNITS	2961 LBS

NATURAL STONE

IRREGULAR FLAGSTONE SOLD PER TON

PRODUCT DESCRIPTION	PRICE /TON	APPROX. COVERAGE PER TON	APPROX. \$/SF
CHILTON FLAGSTONE (1 3/4" - 2 1/4")	\$949.00	85 SF	\$11.16
FOND DU LAC SILVER FLAGSTONE (1 1/2" - 2 1/2")	\$960.00	85 SF	\$11.29
IDAHO SILVER/GOLD FLAGSTONE "THICK" (1" X 1 1/2")	\$540.00	90 SF	\$6.00
IDAHO SILVER/GOLD FLAGSTONE "THIN" (1/2" - 3/4")	\$680.00	245 SF	\$2.78
IDAHO COWBOY COFFEE FLAGSTONE "THICK" (1" - 1 1/2")	\$535.00	115 SF	\$4.65
IDAHO COWBOY COFFEE FLAGSTONE "THIN" (1/2" - 3/4")	\$795.00	245 SF	\$3.24
FULL COLOR FLAGSTONE "THICK" (1 1/4" - 2")	\$455.00	85 SF	\$5.35
FULL COLOR FLAGSTONE "THIN" (3/4" - 1 1/2")	\$455.00	90 SF	\$5.06

PATTERNED FLAGSTONE SOLD PER PALLET

PRODUCT DESCRIPTION	PRICE /SF	SIZE	COVERAGE PER PALLET
FULL COLOR NATURAL CLEFT (1 1/2")	\$8.55	RANDOM QTY. MIXED SIZES	140 - 160 SF
SELECT BLUE NATURAL CLEFT (1 1/2")	\$11.00	RANDOM QTY. MIXED SIZES	140 - 160 SF
FULL COLOR THERMAL (1 1/2")	\$12.95	RANDOM QTY. MIXED SIZES	140 - 160 SF
SELECT BLUE THERMAL (1 1/2")	\$14.95	RANDOM QTY. MIXES SIZES	140 - 160 SF
VALDERS RUSTIC BUFF (1 5/8")	\$11.45	6"X6" - 18"X18" SEE PG. 26	100 SF

NOTE: NATURAL CLEFT SURFACES WILL VARY +/-1". AVAILABILITY ON PATTERNED FULL COLOR AND SELECT BLUE IS LIMITED - PLEASE CALL FOR CURRENT AVAILABILITY AND LEAD TIME.

TUMBLED FLAGSTONE SOLD PER PIECE OR PER TON (IRREGULAR ONLY)

PRODUCT DESCRIPTION	PRICE	SIZE	PRICE/SF
SELECT BLUE IRREGULAR TUMBLED	\$485.00/TON	IRREGULAR +/- 2" THICK APPROX. 70SF/TON	APPROX. \$6.93
SELECT BLUE TUMBLED	\$3.83 EA.	6" X 6" X 2" THICK	\$15.32
SELECT BLUE TUMBLED	\$7.43 EA.	6" X 12" X 2" THICK	\$14.86
SELECT BLUE TUMBLED	\$14.85 EA.	12" X 12" X 2" THICK	\$14.85

STEPPERS & SHIMS SOLD PER TON

PRODUCT DESCRIPTION	PRICE /TON	APPROX. COVERAGE PER TON	APPROX. \$/SF
CHILTON STEPPERS (1" - 2")	\$415.00	85 SF	\$4.65
FOND DU LAC STEPPERS (1" - 2")	\$395.00	85 SF	\$4.88
CHILTON SHIMS	\$235.00	35 FF	\$6.72/FF
FOND DU LAC SHIMS	\$235.00	35 FF	\$6.72/FF

WALLSTONE & BORDER SOLD PER TON

PRODUCT DESCRIPTION	SIZE	PRICE /TON	APPROX. COVERAGE PER TON
CHILTON CUT DRYWALL	8" X 2" - 3" X RANDOM LENGTHS	\$375.00	15-20 FF
FOND DU LAC CUT DRYWALL	8" X 2" - 3" X RANDOM LENGTHS	\$380.00	15-20 FF
CHILTON BORDER EDGE	4" X 4" X RANDOM LENGTHS	\$540.00	110 LF
FOND DU LAC BORDER EDGE	4" X 4" X RANDOM LENGTHS	\$510.00	110 LF

COBBLE STONE SOLD PER TON

PRODUCT DESCRIPTION	PRICE /TON	APPROX. COVERAGE PER TON
BULK COBBLE (2" - 4")	\$62.95	35-40 SF
BULK COBBLESTONE (8" - 12")	\$134.00	35-40 SF
BULK COBBLESTONE (12" - 24")	\$125.00	30-35 SF
BULK COBBLESTONE (18" - 24")	\$145.00	30-35 SF
MICHIGAN COBBLE (4" - 8")	\$260.00	25-30 SF
CANADIAN COBBLE (2 1/2" - 5")	\$375.00	25-30 SF
CANADIAN COBBLE (5" - 10")	\$395.00	35-40 SF
CANADIAN COBBLE (10" - 20")	\$395.00	30-35 SF
RIVER SKIPS (MEDIUM)	\$1,295.00	

FULL COLOR IRREGULAR FLAGSTONE



FULL COLOR PATTERNED FLAGSTONE



LANDSCAPE ACCESSORIES

PRODUCT DESCRIPTION	PRICE
SRW ADHESIVE 10oz.	\$5.95 EA.
SRW ADHESIVE 28oz.	\$10.95 EA.
WEEDSHEILD FABRIC 3' X 100' ROLL	\$29.95 EA.
WEEDSHEILD FABRIC 3' X 50' ROLL	\$15.95 EA.
FILTRATION FABRIC 4' X 100 ROLL	\$112.95 EA.
VERSA-GRID 3.0 6' X 150' ROLL (SOLD PER LINEAR FOOT OR PER ROLL)	\$2.58 LF
VERSA-GRIL 5.0 6' X 150' ROLL (SOLD PER LINEAR FOOT OR PER ROLL)	\$2.87 LF
VERSA-LOK PINS	\$0.25 EA.
VERSA-LIFTER (DEPOSIT/RENTAL OR PURCHASE)	\$74.95 EA.
SNAP EDGING 8' LENGTHS	\$9.00 EA.
PAVER EDGE SPIKES 10" 150/BOX	\$0. 45 EA.
PERFORATED PIPE 4" X 100' ROLL	\$129.00 EA.
SOLID PIPE 4" X 100' ROLL	\$135.00 EA
PERFORATED SOCK PIPE 4" X 100' ROLL	\$159.00 EA.
4" PIPE "T"	\$7.95 EA.
4" PIPE "Y"	\$12.50 EA.
4" PIPE 45 DEGREE CORNER	\$8.70 EA.
4" PIPE 90 DEGREE CORER	\$9.95 EA.
4" PIPE END CAP	\$4.65 EA.
4" PIPE SNAP COUPLER	\$2.70 EA.
JOINTING SAND TAN 50LB BAG	\$10.20 EA.
EVOLUTION POLYMERIC SAND BEIGE 50LB BAG	\$24.63 EA.
EVOLUTION POLYMERIC SAND BLACK 50LB BAG	\$25.76 EA.
EVOLUTION POLYMERIC SAND GREY 50LB BAG	\$24.63 EA

CALL OR VISIT OUR SHOWROOM FOR PRICING ON OUR OTHER LANDSCAPE TOOLS & PRODUCTS



NOT SEEING SOMETHING YOU *LOVE?*

ASK US ABOUT OUR MANY **SPECIAL ORDER** PRODUCTS!

AURA

NATURAL LANDSCAPES



POLYCOR



MARMIRO STONES®
BY TURAN BEKISOGLU

WE WORK WITH **HUNDREDS** OF
SUPPLIERS AND WOULD LOVE TO HELP
YOU FIND JUST THE RIGHT PRODUCTS
FOR YOUR PROJECT



PINE HALL BRICK

BUILD YOUR DREAMS.



daltile™



Summerset®
PROFESSIONAL GRILLS



Rochester
Concrete Products™



GRAVEL

BULK

PRODUCT	LBS/YARD	\$/YARD	\$/TON
MORTAR SAND	2800	\$35.56	\$2540
2NS CONCRETE SAND	2800	\$27.87	\$19.90
CONCRETE MIX	3000	\$30.68	\$2045
6A (1" ROUND)	2800	\$29.05	\$20.75
10A (1" - 1.5" ROUND)	2800	\$36.96	\$2640
PEA STONE	2800	\$26.32	\$18.80
6AA (1") CRUSHED LIMESTONE	2800	\$34.44	\$24.60
25A (1/2') CRUSHED LIMESTONE	2500	\$40.38	\$32.30
1/4" CRUSHED LIMESTONE	2800	\$44.31	\$31.65
DIAMOND DUST	3000	\$52.20	\$34.80
25A SPECIAL (DIAMOND DUST, 1/2" AND 1/4" CRUSHED LIMESTONE)	3000	\$47.93	\$31.95
22A ROAD GRAVEL	3000	\$30.00	\$20.00
6A (1") RIVER ROCK	2800	\$89.39	\$63.85
10A (2") RIVER ROCK	2800	\$90.02	\$64.30

BOXES - APPROX. 1.66 YARDS

PRODUCT	\$/BOX
BOX OF 10A STONE	\$70.00
BOX OF 10A (2") RIVER ROCK	\$159.00
BOX OF 25A (1/2" CRUSHED LIMESTONE	\$76.00
BOX OF 25A SPECIAL (DIAMOND DUST, 1/2" AND 1/4" CRUSHED LIMESTONE)	\$88.00
BOX OF 6A (1" ROUND)	\$57.00
BOX OF 6AA (1") CRUSHED LIMESTONE	\$66.00
BOX OF 6A (1") RIVER ROCK	\$158.00
BOX OF CONCRETE MIX W/ 1" STONE	\$60.00
BOX OF CONCRETE MIX W/ PEA STONE	\$60.00
BOX OF 2NS SAND	\$55.00
BOX OF DIAMOND DUST	\$95.00
BOX OF ROAD GRAVEL	\$58.00
BOX OF PEA STONE	\$52.00
BOX OF MORTAR SAND	\$68.00
BOX OF 1/4" CRUSHED LIMESTONE	\$82.00

DELIVERY

HARDSCAPE (PALATIZED PRODUCTS OR BOXED GRAVELS)

0-10 MILES	\$110.00
11-20 MILES	\$130.00
21-30 MILES	\$150.00
31-40 MILES	\$180.00
41-50 MILES	\$210.00
51-60 MILES	\$240.00
61-70 MILES	\$290.00
71-80 MILES	\$340.00
81 + MILES	CALL FOR PRICING

GRAVEL

0-5 MILES	\$100.00
6-10 MILES	\$110.00
11-15 MILES	\$120.00
16-20 MILES	\$130.00
21-25 MILES	\$150.00
36-30 MILES	\$170.00
31-35 MILES	\$200.00
36-40 MILES	\$230.00
40+ MILES	CALL FOR PRICING

ADDITIONAL FUEL SURCHARGES MAY OCCUR DURING TIMES OF HIGH FUEL COST



COVINGTON LAYING PATTERNS



PATTERN A

50% - LARGE
34% - MEDIUM
16% - SMALL



PATTERN B

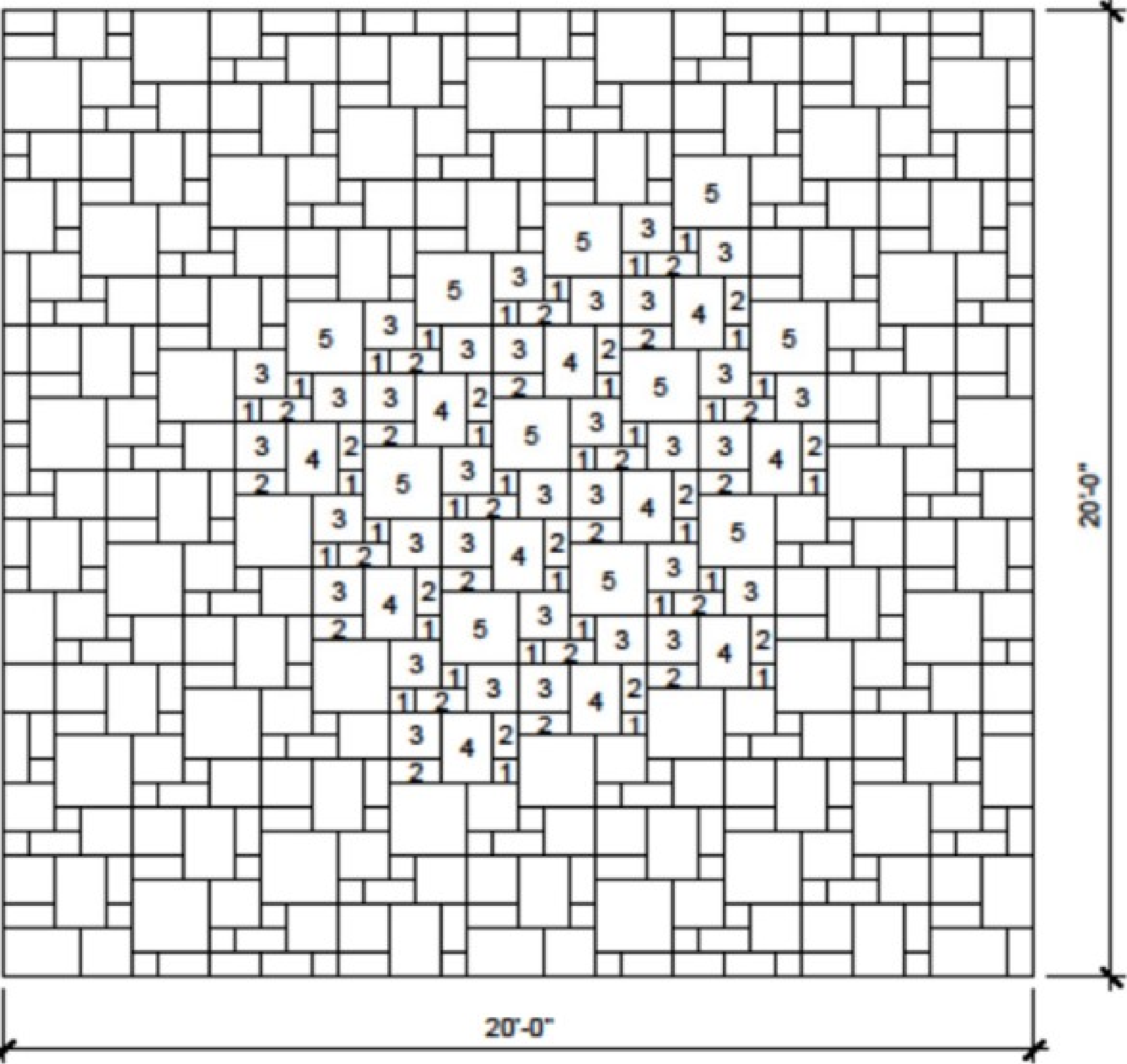
37% - LARGE
50% - MEDIUM
13% - SMALL



PATTERN C

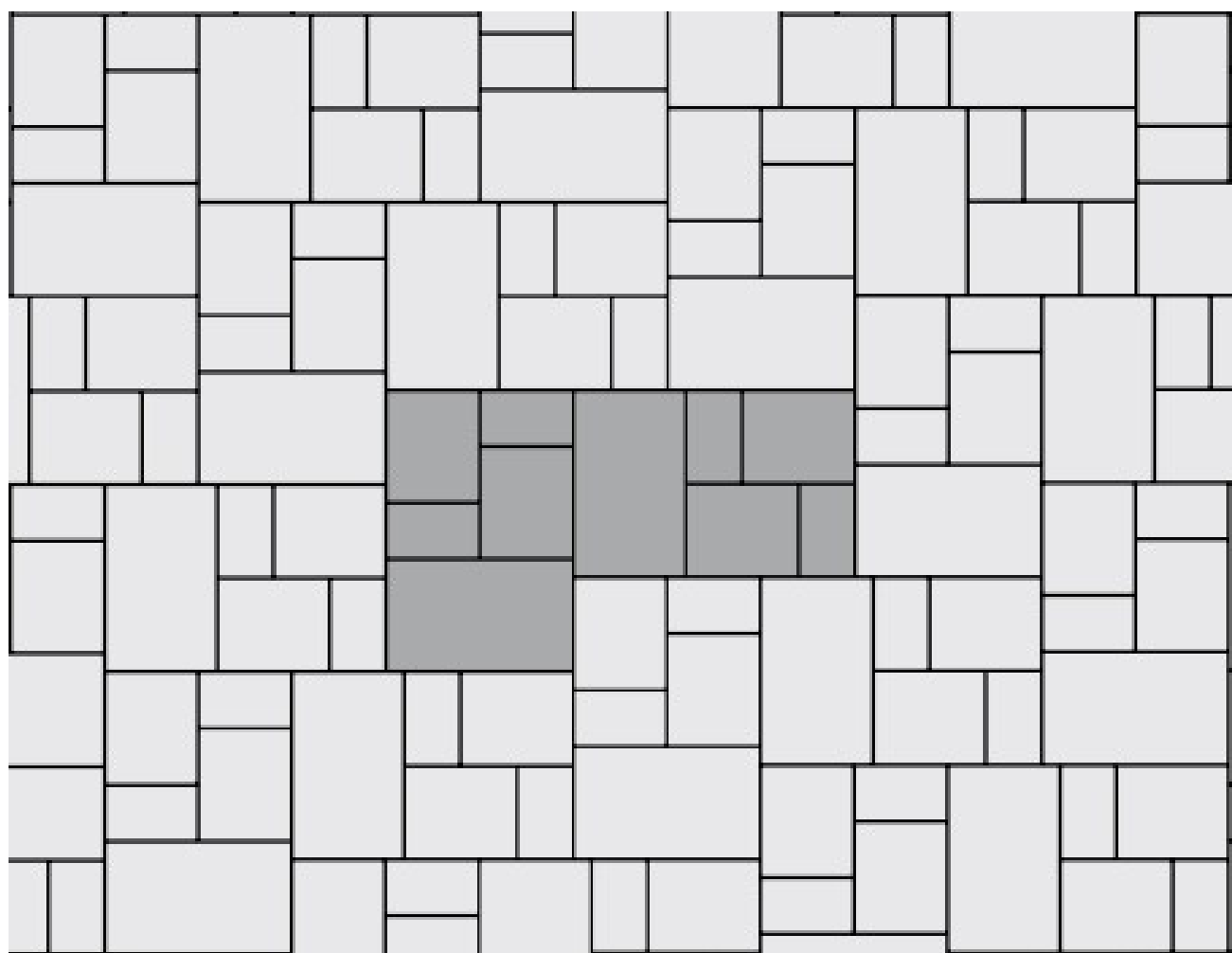
36% - MEGA
24% - LARGE
32% - MEDIUM
8% - SMALL

VALDERS LAYING PATTERN



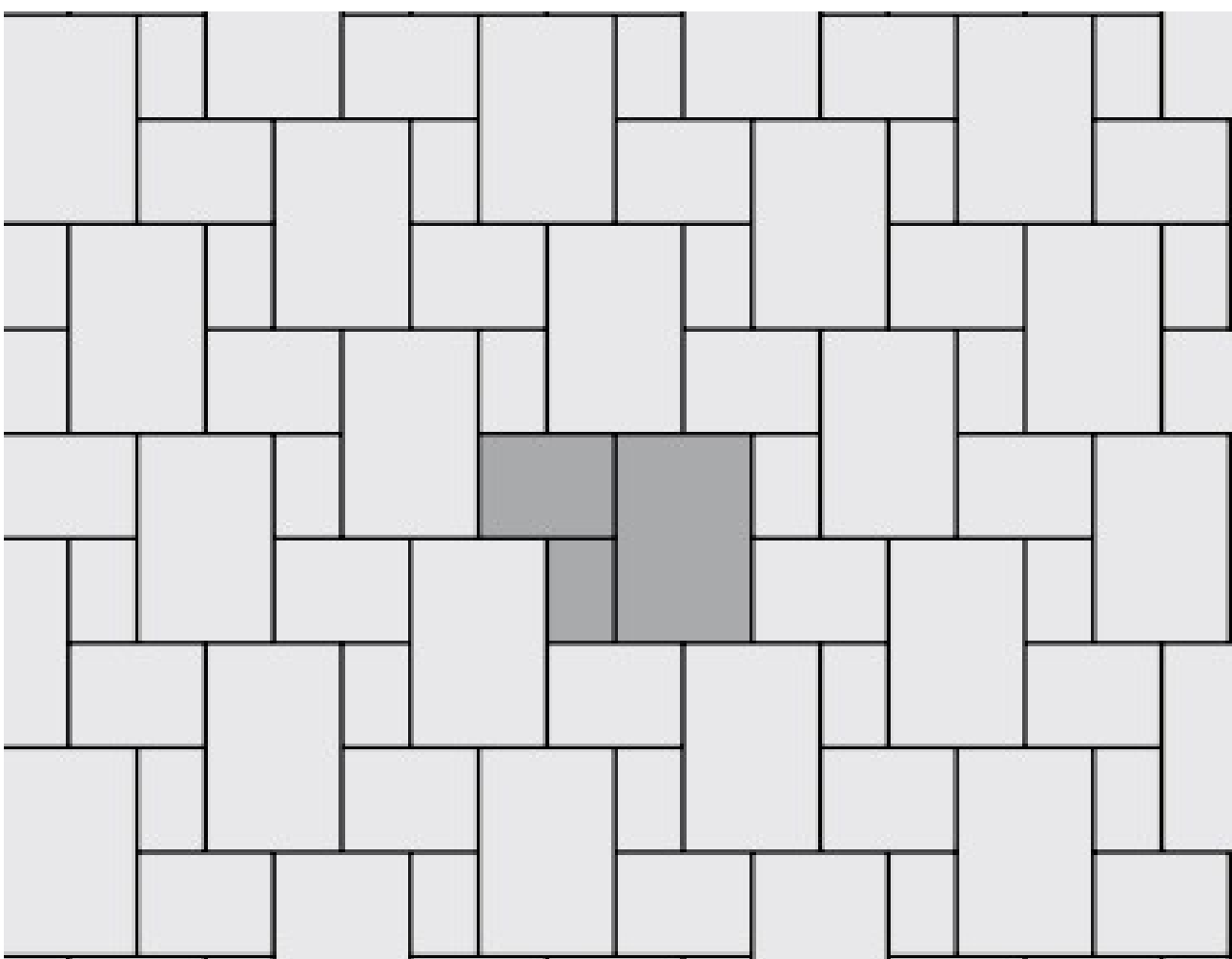
PIECE SCHEDULE PER ~100 SQ. FT. PALLET			
MARK	ACTUAL SIZE (±1/4")	QTY.	% OF BLEND
1	6" x 6"	33	8.25%
2	6" x 12"	33	16.50%
3	12" x 12"	34	34.00%
4	12" x 18"	11	16.50%
5	18" x 18"	11	24.75%

BRUSSELS LAYING PATTERNS



PATTERN AF

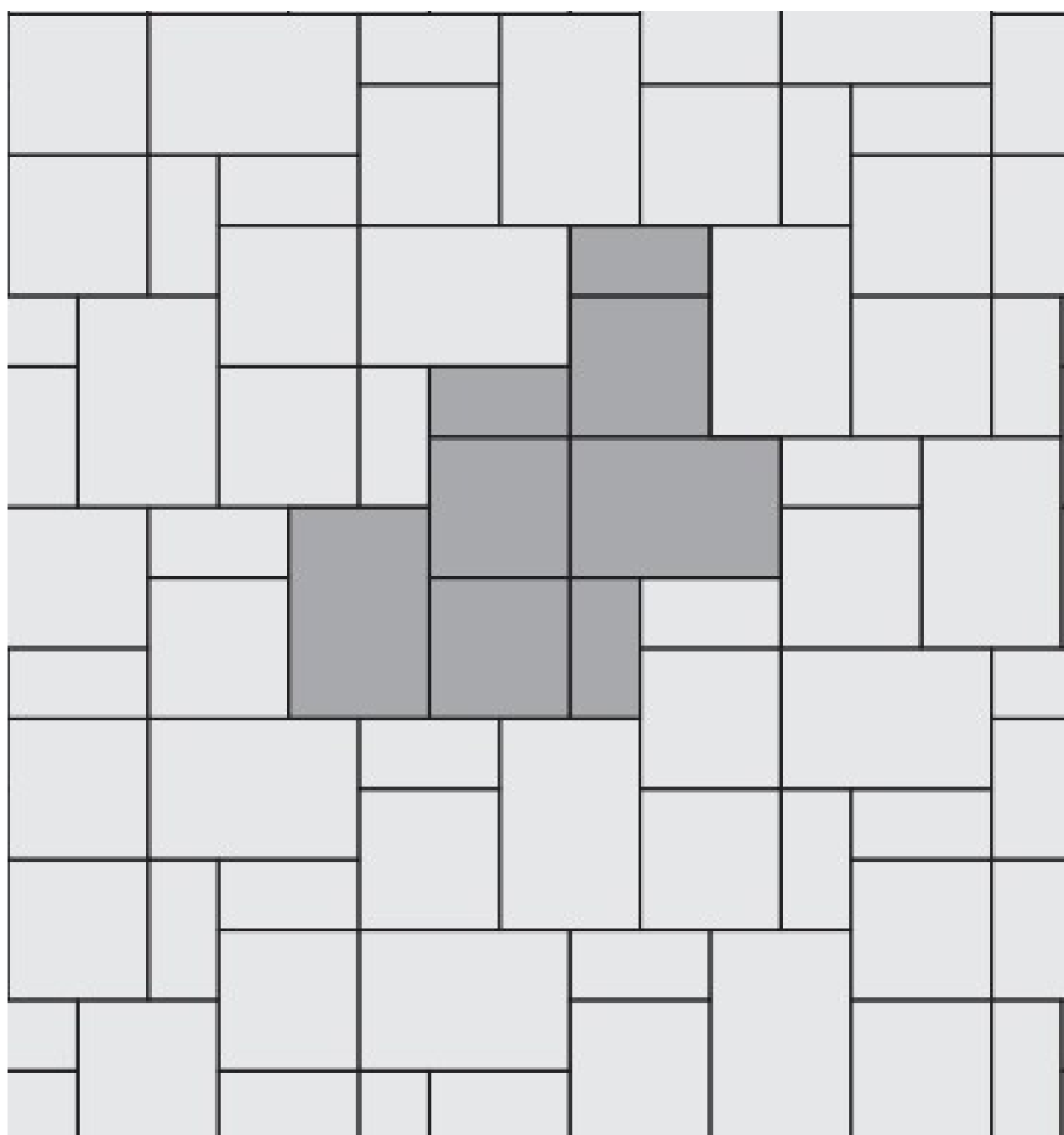
20% - HALF STONES
40% - STANDARD
40% - XL



PATTERN Y

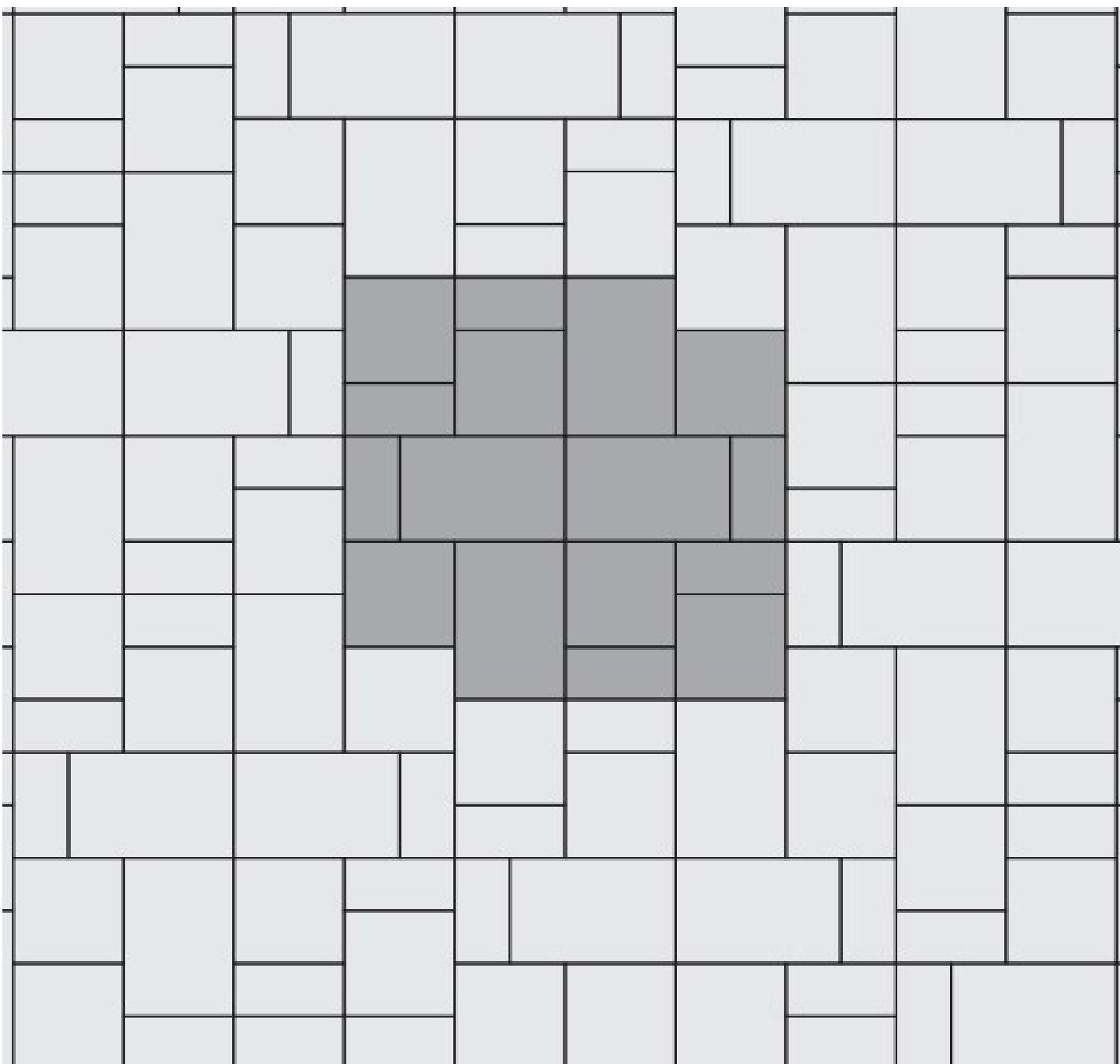
14% - HALF STONES
29% - STANDARD
57% - XL

BEACON HILL PATTERNS



PATTERN A

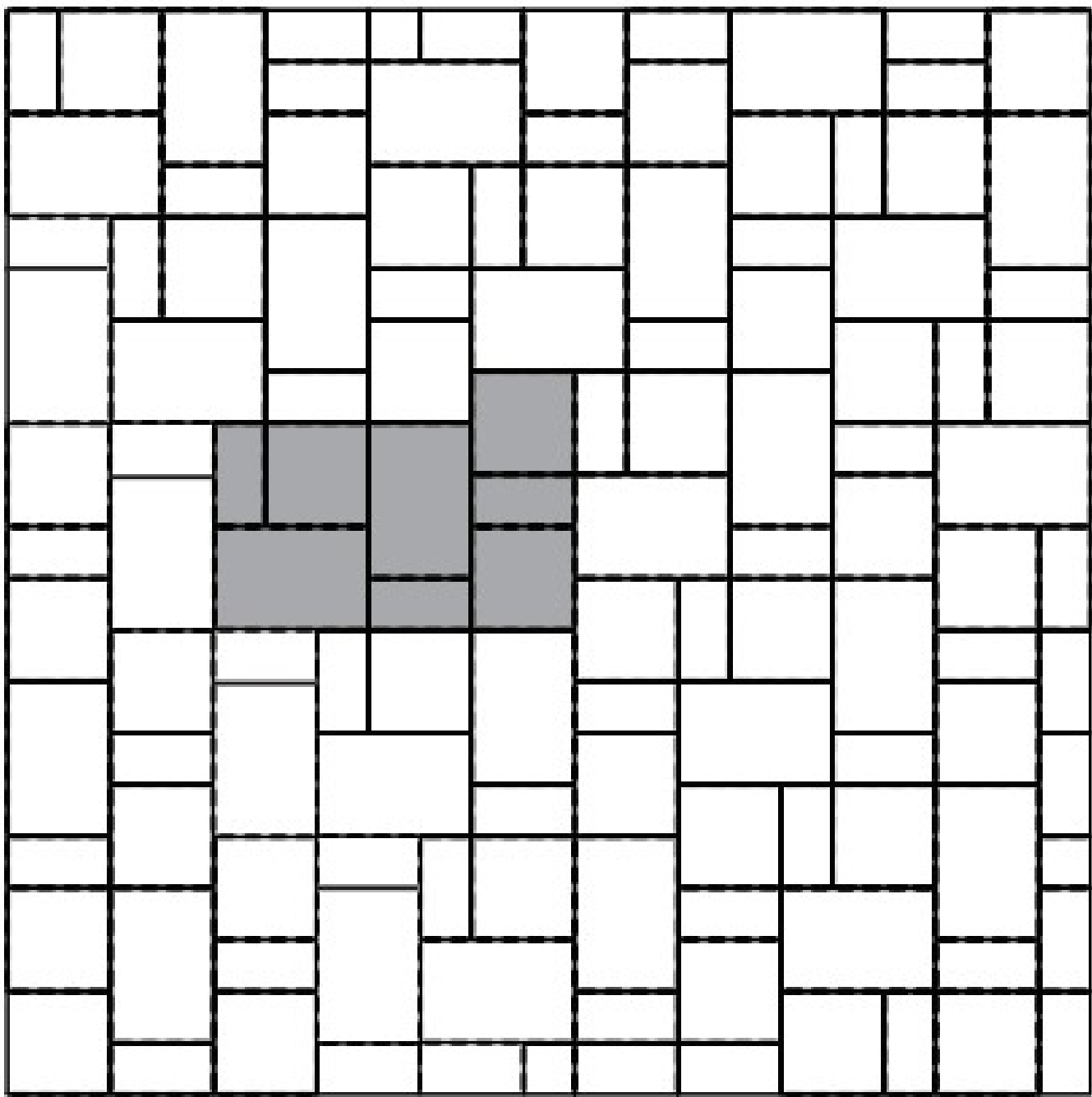
GOES WITH RANDOM BUNDLE



PATTERN B

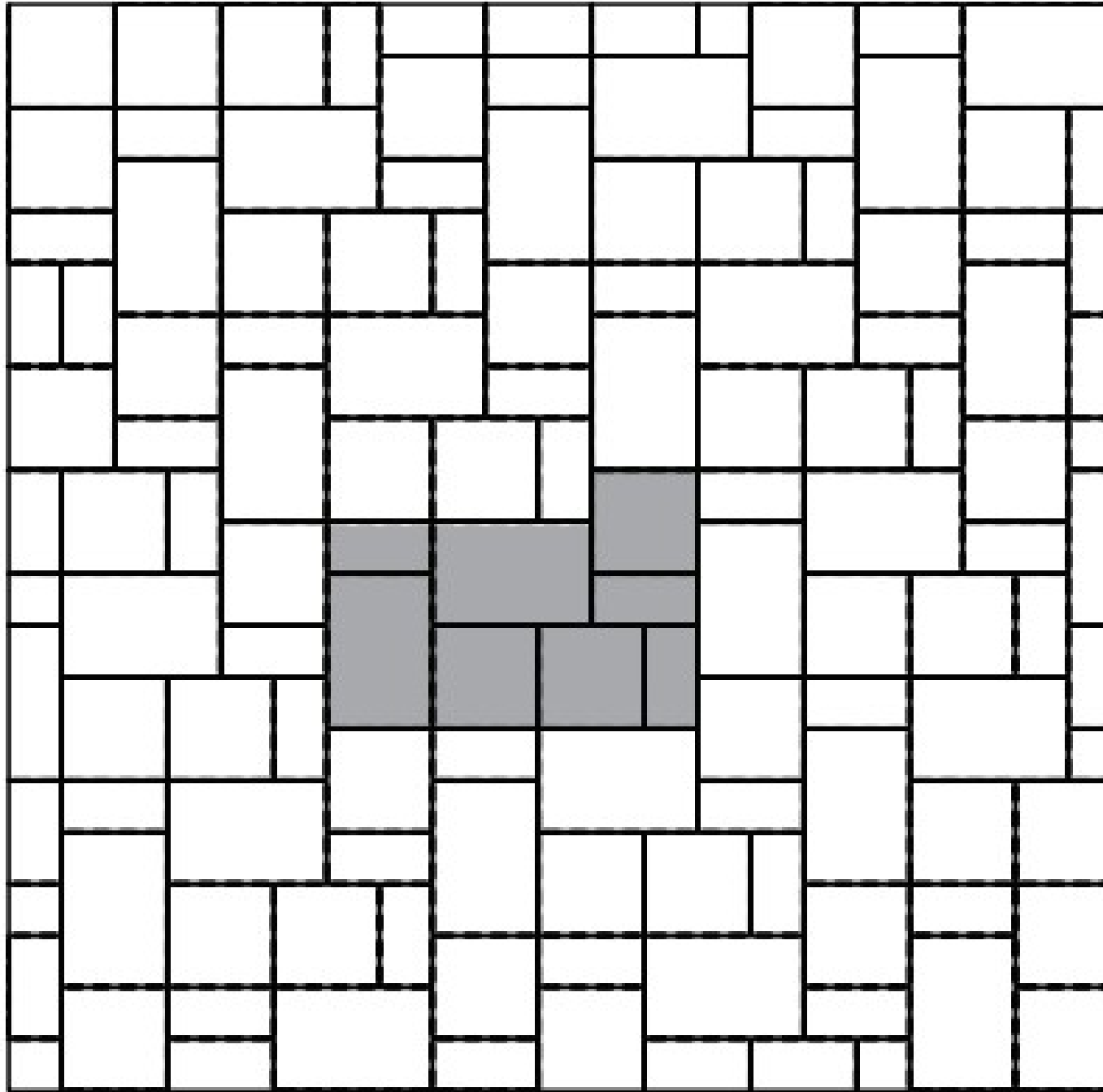
GOES WITH RANDOM BUNDLE

NUEVA LAYING PATTERNS



PATTERN A

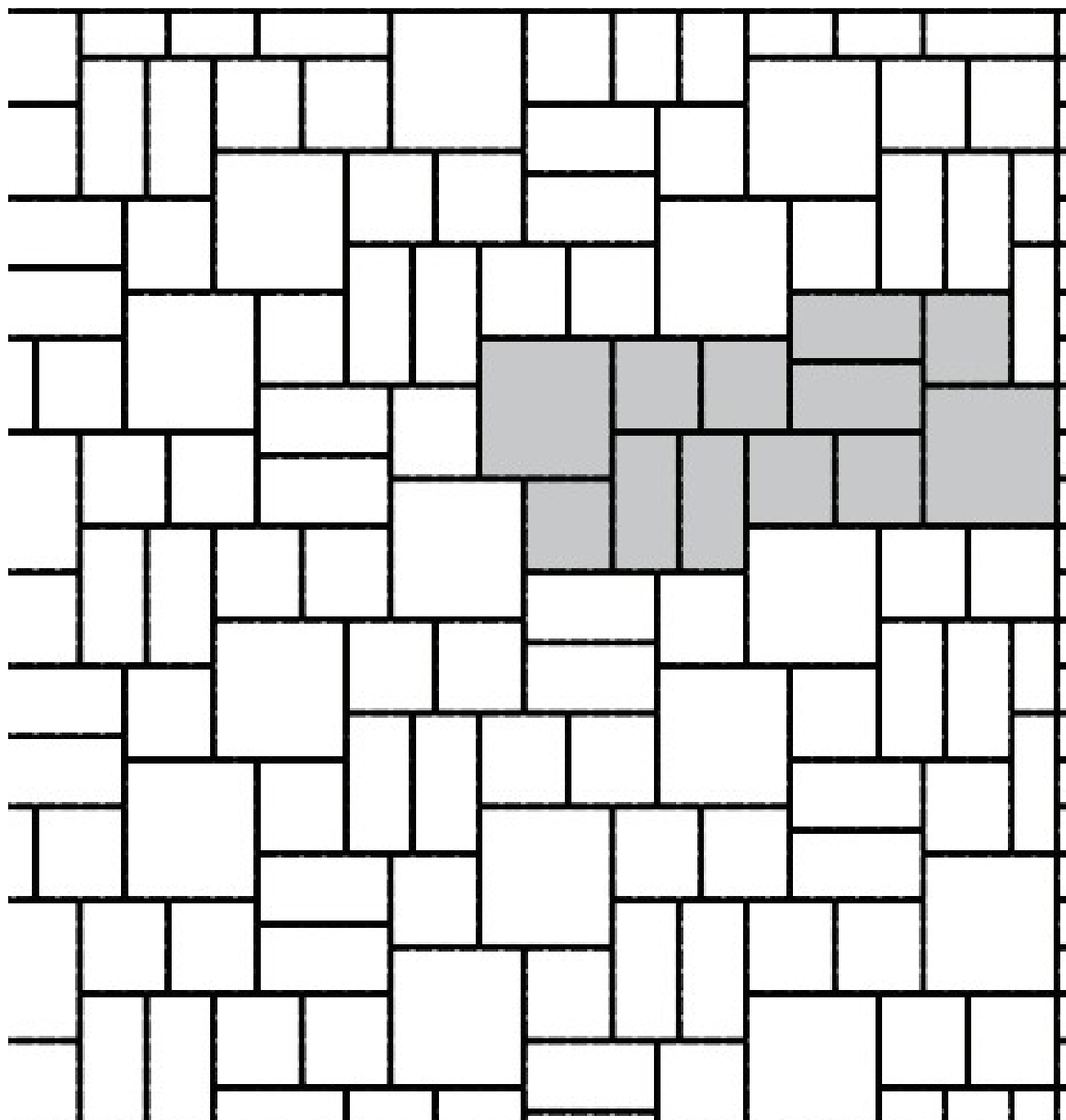
GOES WITH RANDOM BUNDLE



PATTERN B

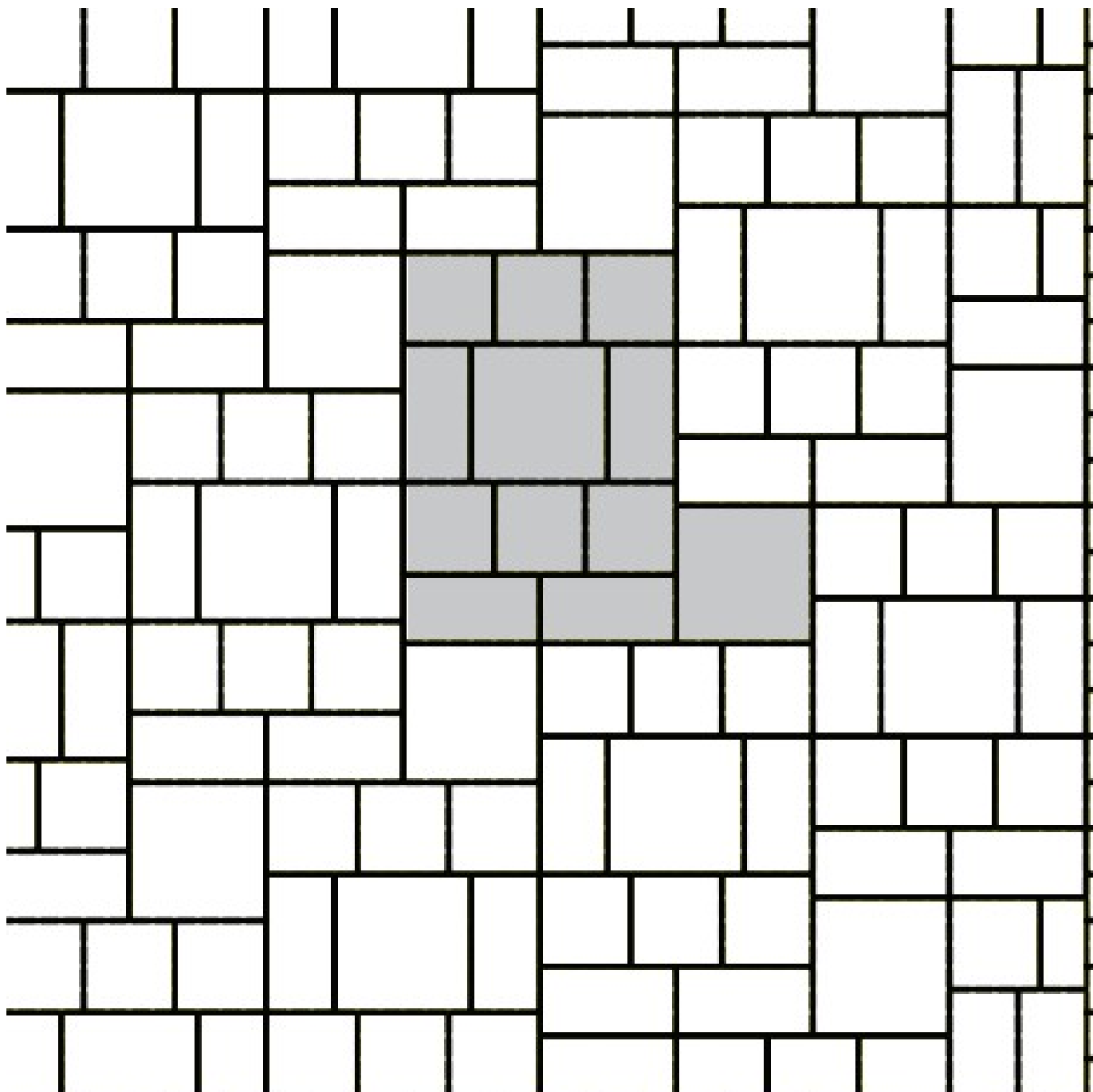
GOES WITH RANDOM BUNDLE

MONTEREY LAYING PATTERNS



PATTERN A

GOES WITH RANDOM BUNDLE



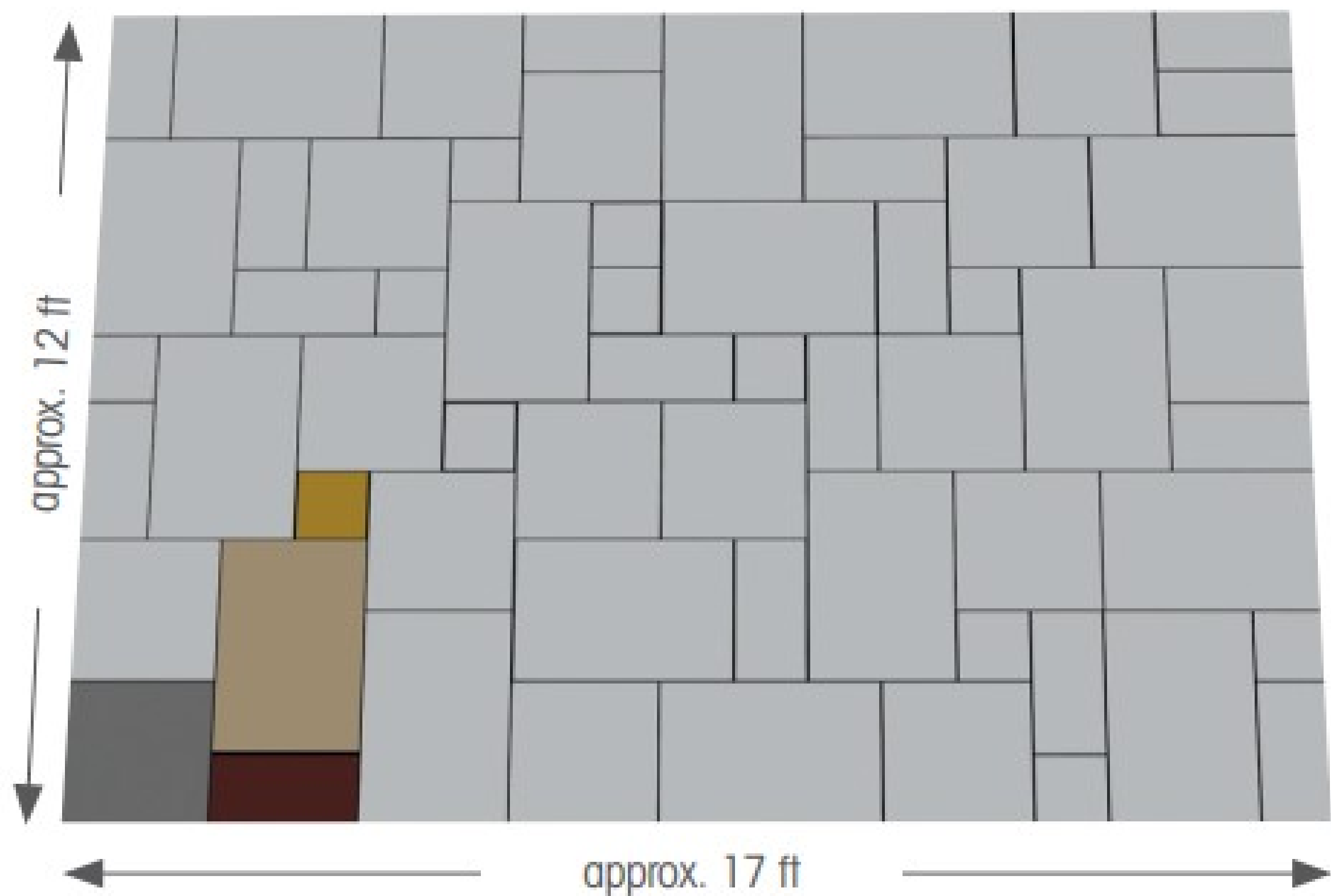
PATTERN D

GOES WITH RANDOM BUNDLE

NATURAL PAVING CLASSIC STONE LAYING PATTERN

When laid this project pack covers an area of approx 205 ft²

Nominal size (inch)	No. per pack	Nominal weight (lbs)
36 x 24	16	2250
24 x 24	16	
24 x 12	16	
11 ³ / ₄ x 11 ³ / ₄	12	



THE CONCRETE SERVICE INC.

The story of The Concrete Service, INC. is the story of founder Ralph Samuelson. Though we are certainly proud of our current incarnation, the pride we have for our innovative beginnings with Ralph is paramount.

When Ralph started a gravel and concrete block company in 1932, he entered himself into a block manufacturing "arms race" of sorts that was occurring during that era. Ralph quickly became obsessed with invention and efficiency. A Pit and Quarry magazine editor wrote in 1946, "Seldom [does one] encounter an operation in which original practical ideas abound." He continues, "all stem from the inventive genius of Ralph Samuelson".

This writer's words were not some overstating flattery spun to aggrandize his article. Ralph's mechanical ingenuity led him to design and sell some of his own original block plants despite the presence of the largest block plant manufacturer in the world just up the road in Alpena. In a 1953 article, William Avery wrote of Ralph's design, "A feature of the block plant is a continuous mixer designed and built by Mr. Samuelson which serves both to mix the concrete and elevate it to feed the hopper over the block machine."

The company remained Ralph's creation until the gradual handover to his two sons during the 1960's, 70's, and 80's. Today, the sons are still involved, but are in the process of passing the reins off to a third generation of the family. No longer a sole manufacturing company, The Concrete Service, INC. has been diversifying in recent years.

The Concrete Service, INC. now hosts the area's greatest selection of Natural Stone, Pavers, Brick, and other landscape products while also remaining true to its manufacturing roots and adding to its menu of blocks. Amongst them are retaining wall blocks that were aptly named "Old Town Wall Stone" to honor the longtime bond with downtown Traverse City.

**Look us up on [FACEBOOK](#)
or visit our [SHOWROOM](#) at
3742 West Front Street, Traverse City Michigan
Give us a [CALL](#) at 231.946.7880
or visit our [WEBSITE](#) at
www.THECONCRETESERVICE.com**